



PLEIADES VASES

A Limited Series
by Alexander Lamont

"I had always seen myself as a star;
I wanted to be a galaxy."

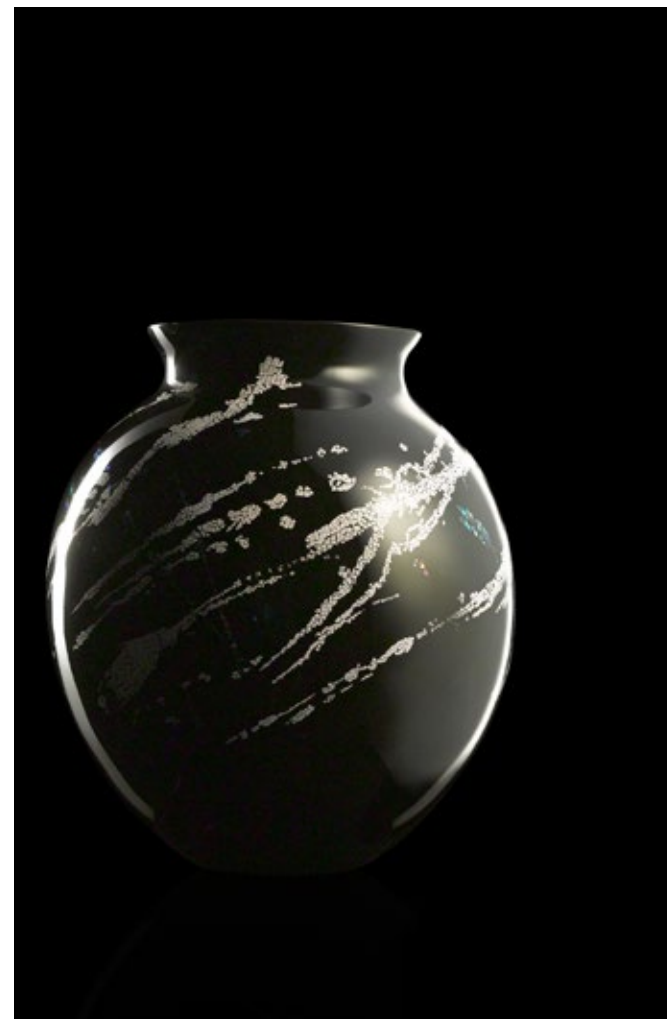
Twyla Tharp

"Working with lacquer and eggshell, I explored ways to bring concepts of planets, constellations and celestial charts onto vessels. Cast vessels, cool and heavy, were the canvas. I drew triangles dancing like the shapes of star clusters; the splash of solar nebulae and wholly covered, porcelain spinning planets with black or red fissures. I drew across the sand-blasted dinanderie surfaces and visited the lacquer rooms each day to watch as the eggshell and abalone and lacquer followed my sketches and an almost monochrome polished eloquence came to life. The kite-string-like floating deltoids of bright or faded clusters, the energy of the strokes and lines of stars were full of movement and distance; the luminosity of the covering mosaics and the mesmerizing reflectiveness and depth of the natural lacquer all brought a vibrant anima to the vases. Alone, in groups and as pairs they evoke the lightness and blackness of the night skies. "

Alexander Lamont

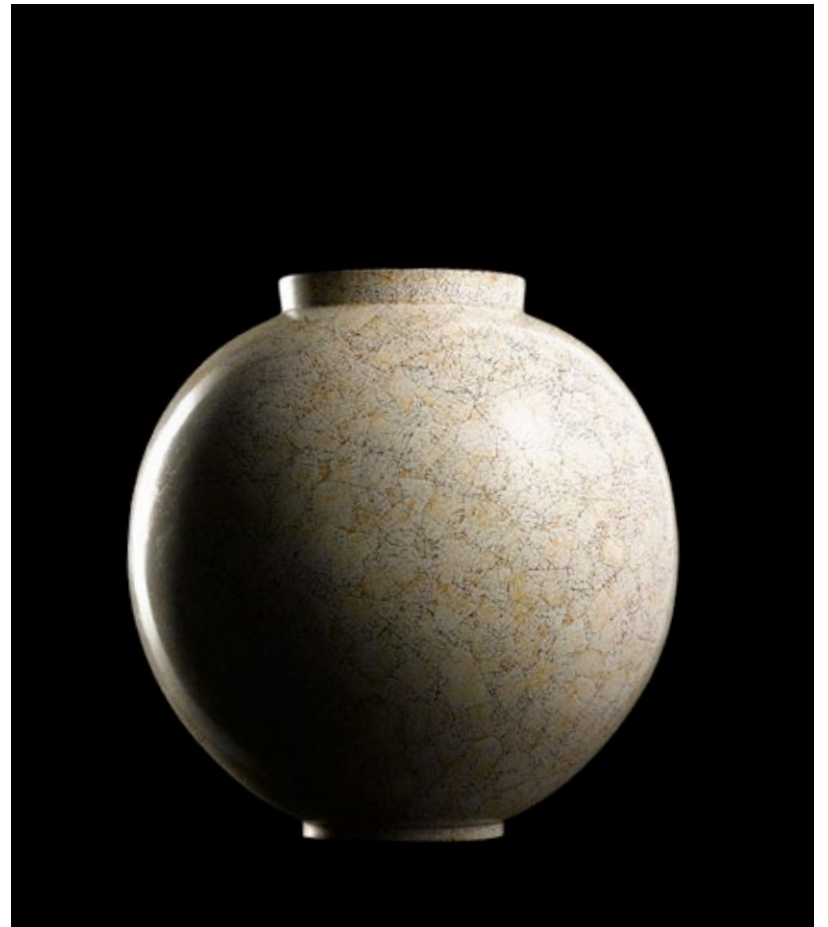


Helio Jars, Nebula Pattern

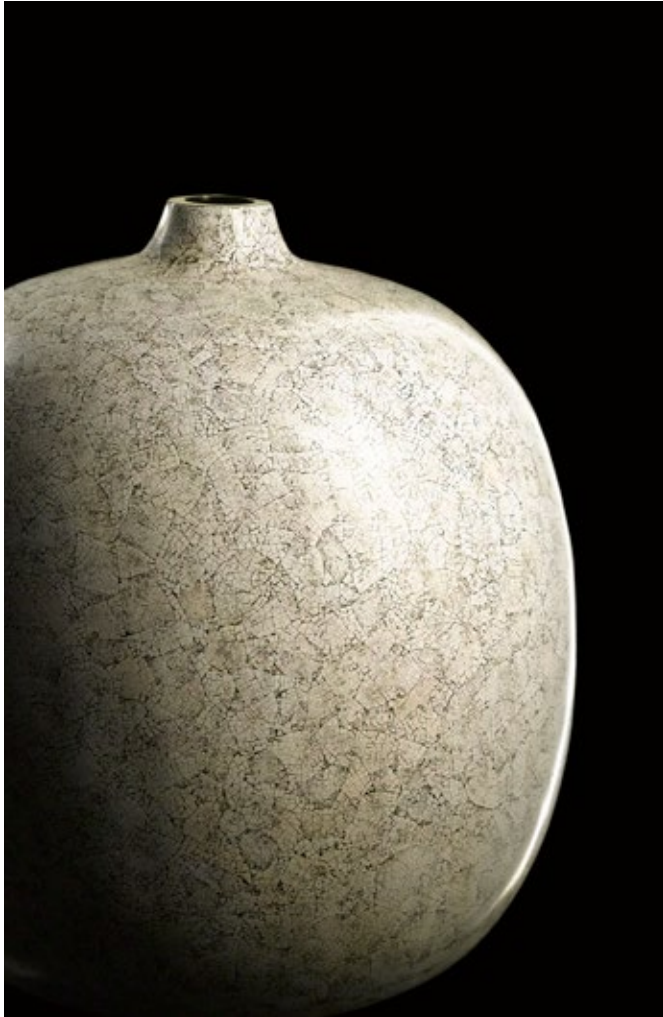


Mercury Vase, Porcelain Noir
Radiant Vases Tall and Low, Porcelain Noir (right)

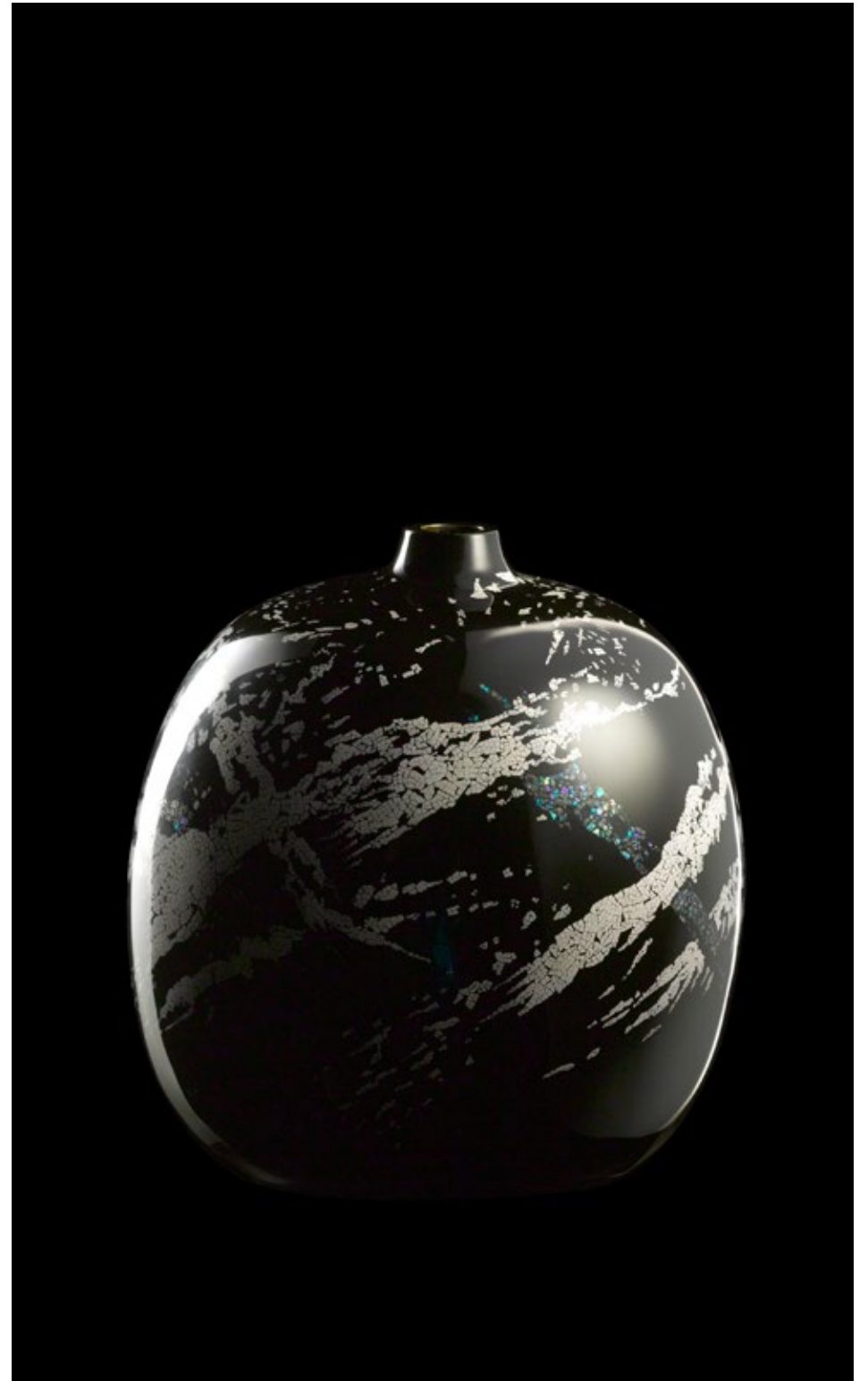




Eclipse Vase, Porcelain Rouge
Plume Vases, Nebula Pattern (left)



Supernova Vase, Porcelain Noir
Supernova Vase, Nebula Pattern (right)







Supernova Vase, Zodiac Pattern
Helio Jar, Zodiac Pattern (right)





Mercury Vase, Orions Belt
Mercury Vase, Nebula Pattern (left)



Helio Jar, Zodiac Pattern

Radiant Vase Tall, Zodiac Pattern (right)





Dinanderie techniques of casting and repoussé were used to create vessels over which eggshell and abalone were applied before five to seven layers of viscous treacle black or natural red lacquer were added, sanded between layers and finally polished. A single artisan worked on every piece from start to finish to bring harmony.

Heights range from 5 1/2" – 20", 14cm – 50cm

