



ALEXANDER
LAMONT



EDITIONS



WHERE TRADITION EMBRACES THE AVANT GARDE

At Alexander Lamont, our objects, furniture and lighting are made to fall in love with, to be treasured and touched and to bring to their owners a joyful communion between artistic design and the great traditions of workshop excellence.

At Alexander Lamont, our furniture, lighting and accessories are made to fall in love with, to be treasured and touched and to bring to their owners a joyful communion between an artistic design sensibility and the great traditions of workshop excellence.



Alexander Lamont | Editions

Editions is the curated collection of decorative objects and accessories designed by Alexander Lamont and created in his workshops. The British designer's original works encompass voluptuous, natural forms cast in bronze; sculpted vessels and candleholders lined with pure gold; deeply pigmented velvet-smooth jade-cut glass vases; boldly faceted blocks of rock crystal delicately accented with pure gold, and trays and boxes enveloped by smooth parchment and raw shagreen. Each object in Lamont's Editions collection is remarkable for the sheer force of its sculptural form and aesthetic personality.

Index

Vessels

| | |
|-----------------------------------|---------|
| Anemone Vases | Page 10 |
| Aphyllum Vase | Page 34 |
| Bristol Vase | Page 22 |
| Coupé Vessels | Page 58 |
| Encyclia Vase | Page 34 |
| Fire Vessels | Page 46 |
| Fuma Bowls | Page 26 |
| Hammered Bowls | Page 64 |
| The Horn of Abundance | Page 52 |
| Lava Vases | Page 12 |
| Lost Leaf Vessels | Page 36 |
| Lusty Vessels | Page 42 |
| Maxillia Vase | Page 34 |
| Miko Jar | Page 44 |
| Musa Vessel | Page 16 |
| Open Weave Vessels | Page 48 |
| Paglia Low Bowl | Page 24 |
| Paglia Vases | Page 20 |
| Paulia Vessel | Page 18 |
| Peking Concubine Vases | Page 56 |
| Peking Globe Vases | Page 54 |
| Poche Vases | Page 14 |
| Pointillist Vessels | Page 40 |
| Reef Vessels | Page 30 |
| Ripple Bowls | Page 62 |
| Rock Crystal Libation Cups | Page 66 |
| Scallop Bowls | Page 60 |
| Shale Vessels | Page 32 |
| Star Vessel | Page 38 |
| Starlet Vessel | Page 38 |
| Twisted Stem Vases | Page 50 |
| Umbra Vases | Page 28 |
| Verglas Ice Bucket | Page 72 |
| Verglas Rock Crystal Tumblers | Page 70 |
| Verglas Rock Crystal Wine Glasses | Page 71 |
| Vitrum Lidded Jar | Page 68 |
| Vitrum Lidded Jarlet | Page 68 |

Boxes

| | |
|-------------------|--------------|
| Cove Boxes | Page 94 |
| Mantle Boxes | Page 90 |
| Masa Studio Boxes | Page 98, 100 |
| Meso Boxes | Page 88 |
| Reef Boxes | Page 92 |
| Steamer Boxes | Page 96 |

Trays

| | |
|--------------------|---------|
| Bristol Tray | Page 80 |
| Lagoon Trays | Page 82 |
| Paglia Long Tray | Page 78 |
| Paglia Square Tray | Page 76 |
| Quatrefoil Trays | Page 84 |

Sculpture

| | |
|-------|----------|
| Raven | Page 102 |
| Toad | Page 104 |

Candleholders

| | |
|--------------------------|----------|
| Float Candleholders | Page 108 |
| Contrepoids Candlesticks | Page 118 |
| Crucible Candleholders | Page 116 |
| Keys Hurricane | Page 122 |
| Orb Candleholders | Page 112 |
| Paglia Candleholders | Page 110 |

When viewing images in this catalogue please note that the colours and tones vary in different light conditions and that the techniques and materials we use contain within them a degree of natural variation that lies at the heart of our artistic and craft ethos.

VESSELS





Anemone Vases

In rock pools and coral reefs, soft anemones hold onto rocks as the tides rise and fall; opening, closing, moving with the water. The vases suggest this form-changing idea their shapes shifting when viewed from different sides.

| | | | |
|-------------|------|-------------------------|---------------------|
| 1. FG006156 | Low | Dia 9 in Dia 24.5 cm | H 6 in H 15 cm |
| 2. FG006157 | Tall | Dia 7 ¾ in Dia 20 cm | H 7 ¾ in H 20 cm |



Lava Vases

Raw and planetary the Lava Vases are like orbs in formation. Beautiful as naked sculpture or when supporting a wonderful arrangement, the Lava Vases suggest the elemental forces of the universe with richly-applied patina over strong textures.

| | | | |
|-------------|-------|-------------|-----------|
| 1. FG006150 | Small | Dia 6 in | H 5 ½ in |
| | | Dia 15 cm | H 14 cm |
| 2. FG006151 | Large | Dia 8 ½ in | H 7 ¾ in |
| | | Dia 21.5 cm | H 19.5 cm |

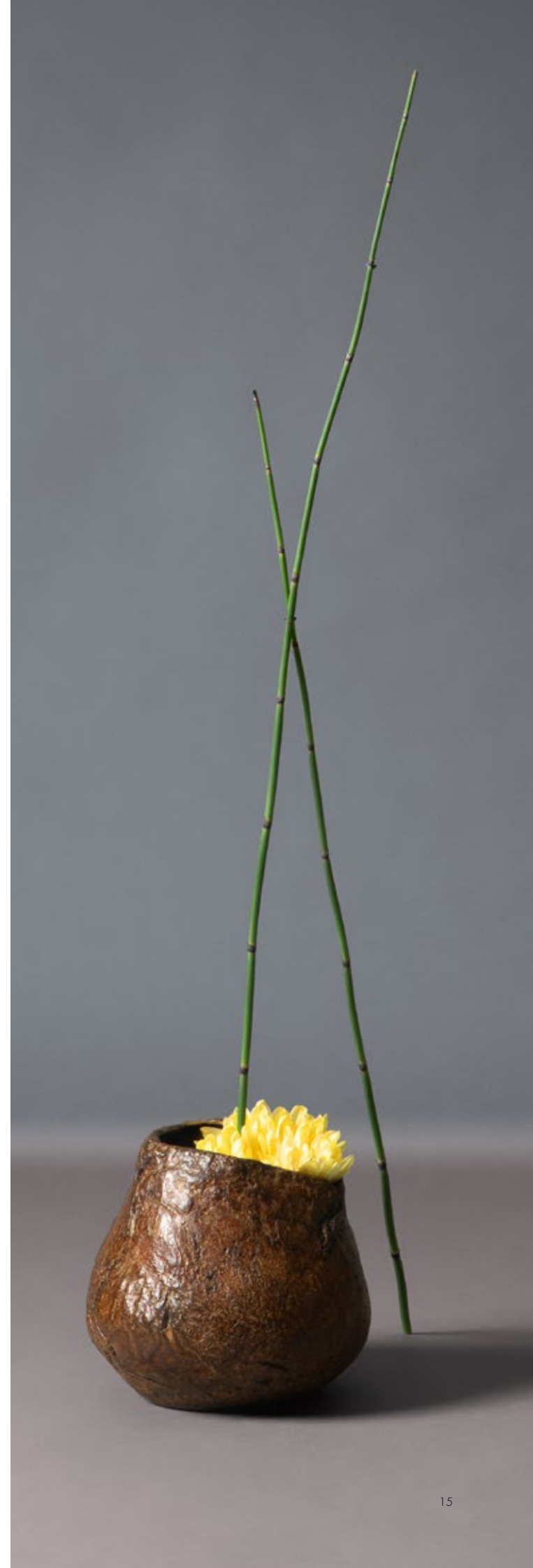


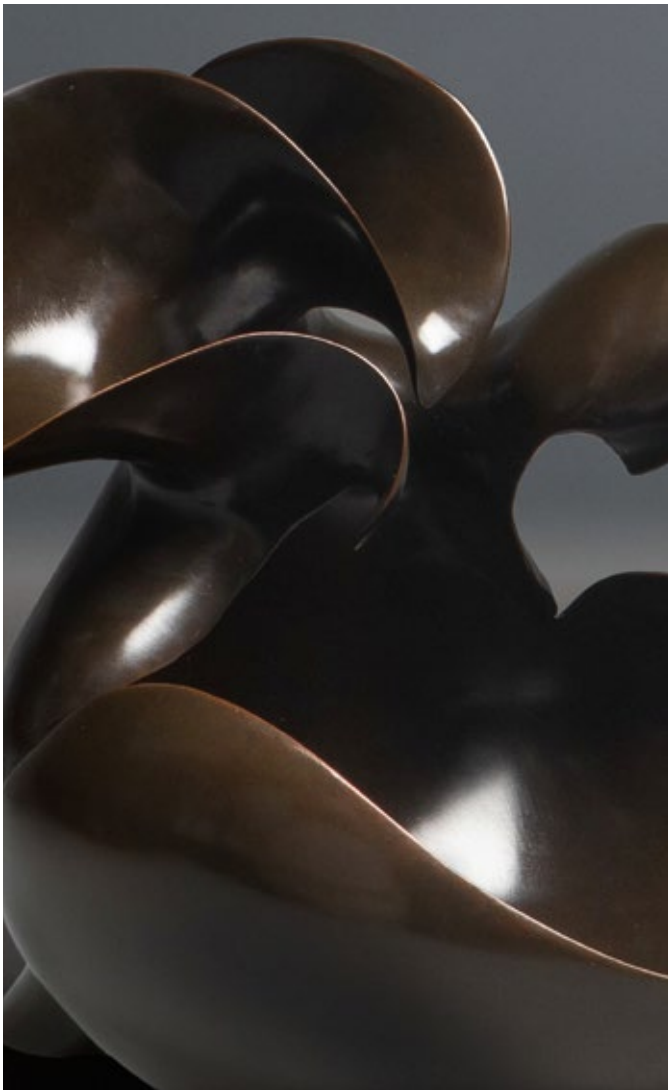


Poche Vases

Like ancient leather, the Poche vases have swollen and cracked during the sculpting. With gentle curves and the marks of movement and age, these chic vessels adorn quietly.

| | | | |
|-------------|-------|-------------------------|-----------------------|
| 1. FG006154 | Small | Dia 6 in Dia 15.5 cm | H 5 ¼ in H 13.5 cm |
| 2. FG006155 | Large | Dia 9 in Dia 23 cm | H 8 ½ in H 22 cm |



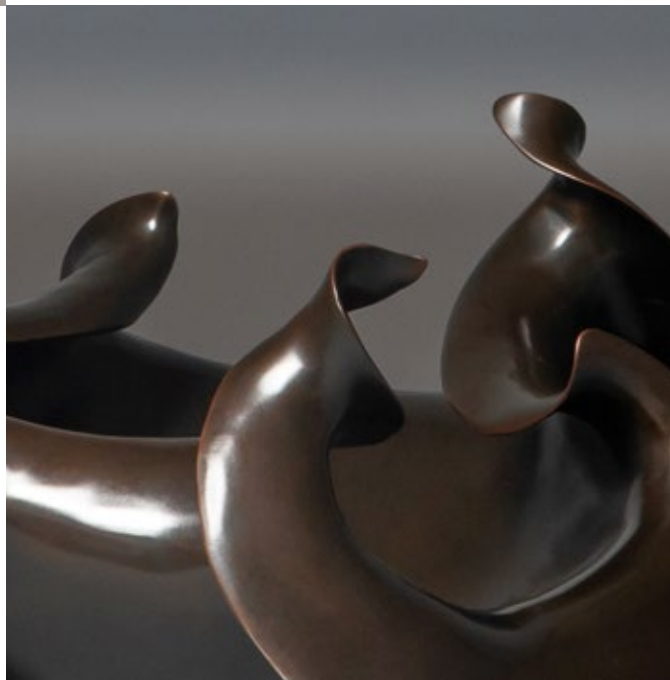


Musa Vessel

The banana flower is encased with wonderful thick leaves that curl and roll as they dry. South African sculptress Astrid Dahl has created the Musa vessel for Alexander Lamont as an undulating bowl that sits in tropical splendour on any piece of furniture.

| | | | |
|----------|-----------|-----------|-----------|
| FG006152 | W 10 in | L 12 ½ in | H 10 in |
| | W 25.5 cm | L 32 cm | H 25.5 cm |





Paulia Vessel

An African Violet was the inspiration for this bronze sculptural form of sensual curves and falling lobes. Astrid Dahl creates rich organic works for Alexander Lamont, inspired by the delicate petals and leaves of tropical flora.

| | | | |
|----------|-----------|-----------|-----------|
| FG006153 | W 13 ¾ in | L 14 in | H 7 ¼ in |
| | W 34 cm | L 35.5 cm | H 18.5 cm |

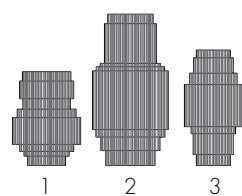




Paglia Vases

A set of three vases built of layered straw and cast in brass. The inspiration was the cut straw of the roofs of houses where Alexander grew up; thatchers would spend weeks up on the roof cutting, shuffling and stepping bundles of straw until finally a beautiful golden roof was revealed.

| | | |
|-------------|-------------------------|----------------------|
| 1. FG004123 | Dia 7 in Dia 18 cm | H 9 ¾ in H 25 cm |
| 2. FG004231 | Dia 7 ¾ in Dia 20 cm | H 15 ¾ in H 40 cm |
| 3. FG004150 | Dia 6 in Dia 15.5 cm | H 12 in H 30.5 cm |





Bristol Vase

A vase that shows the flexible and supple nature of parchment - rings of grained ivory are wrapped around a voluptuous form that is finished and lined with brass.

| | | |
|----------|--------------------------------------|-------------------------------------|
| FG004237 | Dia 8 ³ / ₄ in | H 11 ³ / ₄ in |
| | Dia 22.5 cm | H 30 cm |





Paglia Low Bowl

A sunburst of straw fans out in gorgeous gold cast brass creating a sculptural and functional vessel.

| | | |
|----------|-------------|----------|
| FG004232 | Dia 13 ½ in | H 3 ¼ in |
| | Dia 34.5 cm | H 8 cm |





Fuma Bowls

A group of warm bowls inspired by Alexander's early years in Kenya where the family home was always full of baskets and woven boxes.

On the outside these cast vessels have a tightly woven texture in an almost burnt dark tone while the inside emits a pale, contemporary luminosity.

A delightful group to sit together as light sculptures.

| | | | |
|-------------|-------------|--------------------------------------|-----------------------|
| 1. FG004007 | Small | Dia 3 ¾ in Dia 9.5 cm | H 3 ½ in H 8 cm |
| 2. FG004008 | Medium | Dia 5 ¼ - 5 ½ in Dia 13.5 - 14 cm | H 3 ¾ in H 9.5 cm |
| 3. FG004009 | Large | Dia 5 ½ - 5 ¾ in Dia 14 - 14.5 cm | H 5 ¼ in H 13.5 cm |
| 4. FG004010 | Extra Large | Dia 5 ¾ - 6 in Dia 14.5 - 15 cm | H 6 in H 15.5 cm |



Umbra Vases

Three powerfully curved vases that seem to sit poised on the point of the curve. The narrow lip allows for sculptural flower displays while the deeply textured surface gives a monumental aspect.

| | | | |
|-------------|--------|---------------------|------------------------|
| 1. FG000179 | Small | W 3 ½ in W 9 cm | H 7 ½ in H 20 cm |
| 2. FG000180 | Medium | W 4 in W 10 cm | H 8 ¾ in H 22 cm |
| 3. FG000181 | Large | W 3 ¾ in W 12 cm | H 11 ¾ in H 29.5 cm |





Reef Vessels

A group of vessels that play on a sculptural idea of 'bondage' whereby knots and overlaps create a pattern and hold things down. The ropes wrap a void and so we experience both the sense of wrapping but also the contrasting smooth linear form of the interior.

| | | | |
|-------------|--------|--------------------------|-----------------------|
| 1. FG000174 | Small | Dia 9 in Dia 23 cm | H 7 ¼ in H 18.5 cm |
| 2. FG000175 | Medium | Dia 10 ¼ in Dia 26 cm | H 8 in H 20 cm |
| 3. FG000176 | Large | Dia 13 ½ in Dia 34 cm | H 10 in H 25.5 cm |

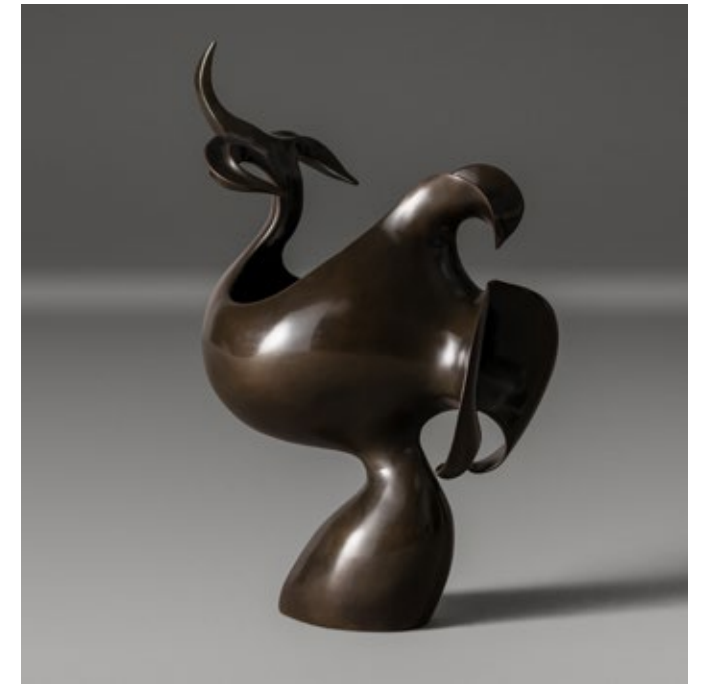




Shale Vessels

Vases that were inspired by geology - depicting the layers and folds and crust of the earth in their texture. They are sculptural pieces yet highly functional as vases for display.

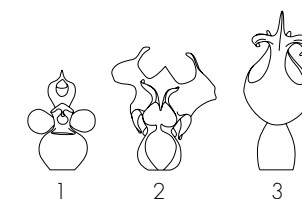
| | | | |
|-------------|-------|-------------------------|-----------------------|
| 1. FG000182 | Small | Dia 3 ¼ in Dia 8 cm | H 7 ¼ in H 18 cm |
| 2. FG000183 | Large | Dia 4 ½ in Dia 11 cm | H 9 ¼ in H 23.5 cm |



1. **Aphyllum** Vase
2. **Encyclia** Vase
3. **Maxillia** Vase

Sculptural forms cast from the architecture of tropical orchids. Tendrils branch upwards and thick labellums fan outwards to create balanced and sensual lines.

| | | | |
|-------------|----------|----------|-----------|
| 1. FG000167 | W 4 ½ in | L 6 in | H 8 ¾ in |
| | W 11 cm | L 15 cm | H 22 cm |
| 2. FG000168 | W 7 ½ in | L 9 in | H 10 ¾ in |
| | W 19 cm | L 23 cm | H 27 cm |
| 3. FG000166 | W 5 ½ in | L 8 ¼ in | H 13 ¾ in |
| | W 14 cm | L 21 cm | H 35 cm |



Lost Leaf Vessels

The subtle, veined and light texture of natural lotus leaves give form to these delicate vessels. Cast in a copper alloy, the leaf is patinated with Japanese techniques to create the varied tones of nature

| | | | | |
|-------------|-------|---------|-----------|-----------|
| 1. FG000148 | Small | W 8 in | L 9 ¼ in | H 5 ¼ in |
| | | W 20 cm | L 23.5 cm | H 13 cm |
| 2. FG000155 | Large | W 10 in | L 13 ¼ in | H 7 ¾ in |
| | | W 25 cm | L 33.5 cm | H 19.5 cm |





1. **Starlet** Vessel
2. **Star** Vessel

I wanted these bud vases to lean over, almost fall, and talk to each other and be both sharp and soft. Finished with a warm patina.

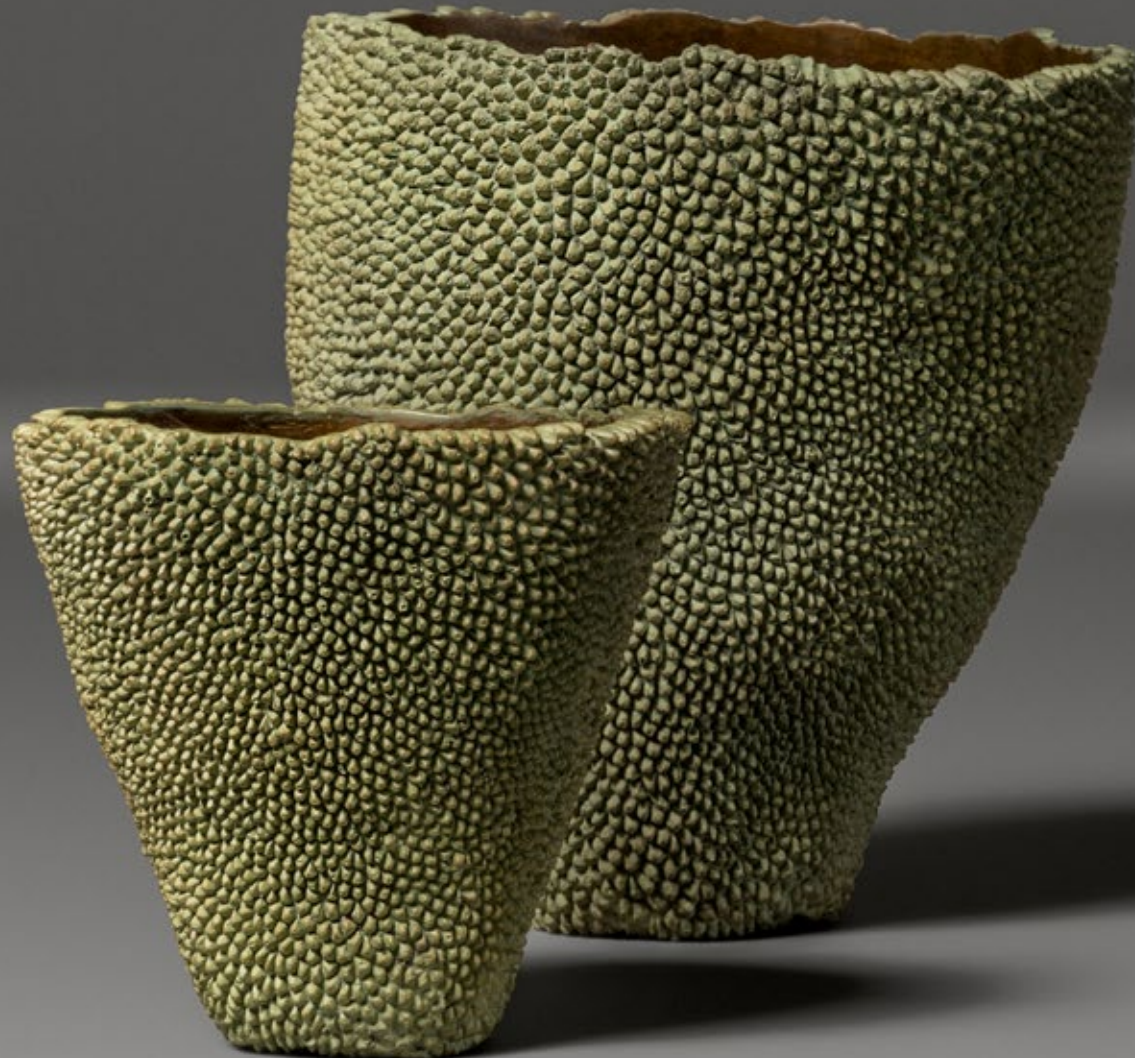
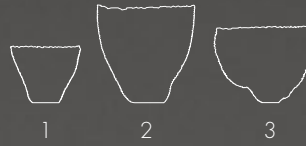
| | | | |
|-------------|-------|-------------------------|-------------------|
| 1. FG000149 | Small | Dia 4 ¾ in Dia 12 cm | H 4 in H 10 cm |
| 2. FG000158 | Large | Dia 9 ½ in Dia 24 cm | H 8 in H 20 cm |



Pointillist Vessels

Winner of the UNESCO award for contemporary design and craft excellence, these striking vessels are enveloped in an amour-like layer of luscious verdigris beads. Holding these pieces leaves a beautiful imprint on the palm.

| | | |
|-------------|---------------------------|-----------------------|
| 1. FG000154 | Dia 7 in Dia 17.5 cm | H 6 ½ in H 16.5 cm |
| 2. FG000152 | Dia 9 ¾ in Dia 24.5 cm | H 9 ¾ in H 24.5 cm |
| 3. FG000153 | Dia 9 ¼ in Dia 23.5 cm | H 8 ¼ in H 20.5 cm |

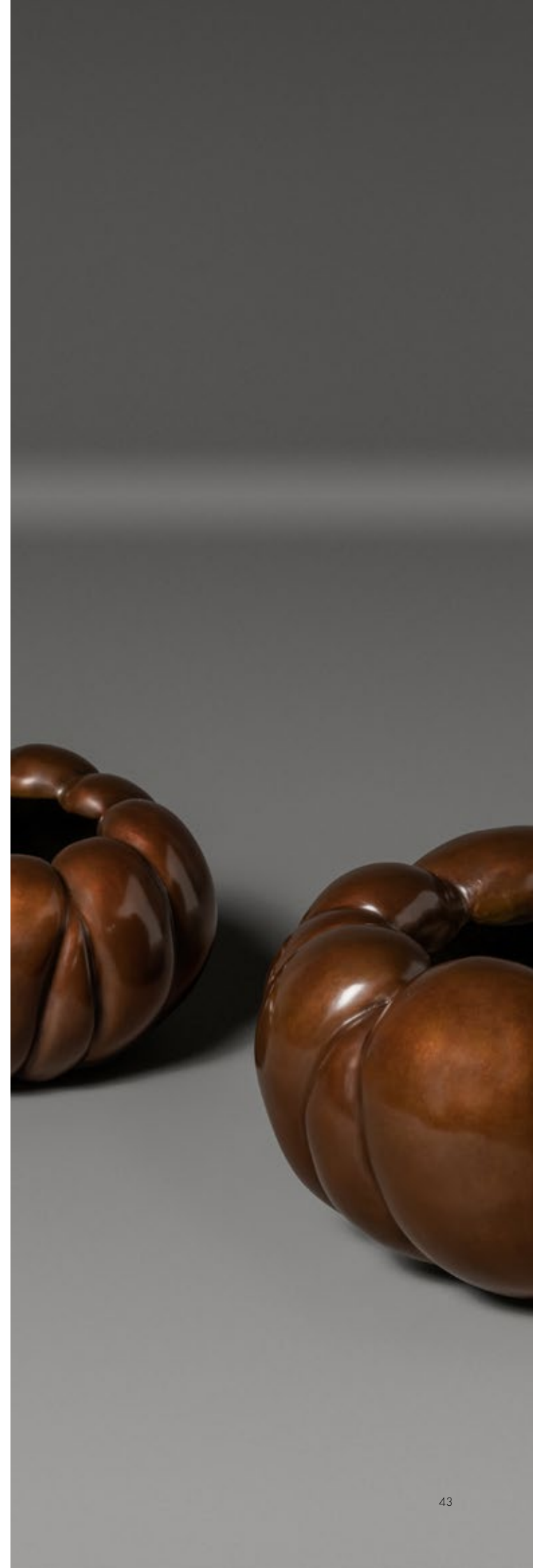




Lusty Vessels

These vessels have a surface that is cool and smooth to the touch. I was inspired by the lobes and scale of a Japanese hibachi brazier, but then began to melt the form into a pumpkin.

| | | | |
|-------------|-------|--------------------------|---------------------|
| 1. FG000157 | Small | Dia 9 in Dia 22.5 cm | H 5 ¼ in H 13 cm |
| 2. FG000156 | Large | Dia 13 ½ in Dia 34 cm | H 7 in H 17.5 cm |





Miko Jar

A sculptural piece inspired by strongly woven bamboo.

| | | |
|----------|-------------|-----------|
| FG000138 | Dia 11 ¾ in | H 8 ½ in |
| | Dia 29.5 cm | H 21.5 cm |





Fire Vessels

The surface of these vessels is rough and ancient. The gold leaf interior emits a wonderful light. We apply a Japanese patina that gives the impression of rusted silver.

| | | | |
|-------------|-------|-------------------------|----------------------|
| 1. FG000146 | Small | Dia 6 ¼ in Dia 16 cm | H 5 ½ in H 14 cm |
| 2. FG000147 | Large | Dia 7 ½ in Dia 19 cm | H 10 in H 25.5 cm |



Open Weave Vessels

Overlapping fronds create a vessel lined with pure gold leaf.

| | | | |
|-------------|-------|-------------|-----------|
| 1. FG000151 | Small | Dia 7 in | H 5 ¼ in |
| | | Dia 17.5 cm | H 13 cm |
| 2. FG000150 | Large | Dia 9 ¼ in | H 9 in |
| | | Dia 23.5 cm | H 22.5 cm |





Twisted Stem Vases

Inspired by an antique Japanese Ikebana vessel, the twisted wood softens when cast. The surface was patinated before the application of pure gold leaf.

| | | | |
|-------------|-------|-------------------------|------------------------|
| 1. FG000137 | Small | Dia 4 in Dia 10 cm | H 8 ¾ in H 22 cm |
| 2. FG000134 | Large | Dia 7 in Dia 17.5 cm | H 15 ¼ in H 38.5 cm |





The Horn of Abundance

A cast vessel with dark patina and gold leaf interior. The gently curved form is contemporary but also breathes a spirit of antiquity.

| | | | |
|----------|-----------|-----------|-----------|
| FG000165 | W 6 ¼ in | L 13 ¾ in | H 4 ¼ in |
| | W 15.5 cm | L 35 cm | H 10.5 cm |



Peking Globe Vases

The facets of this vessel were slowly ground smooth with the technique traditionally used in jade polishing. Molten glass is 'gathered' on a windpipe before being blown into the form.

FG000234 (Imperial Yellow)
FG003474 (Burnt Orange)

| | |
|-------------|---------|
| Dia 10 in | H 8 in |
| Dia 25.5 cm | H 20 cm |





Peking Concubine Vases

The Concubine Vase has voluptuous lines and a slender waist that play with the varying depths and shades of the coloured glass.

FG000236 (Imperial Yellow)

FG000235 (Burnt Orange)

Dia 7 ½ in H 13 ½ in

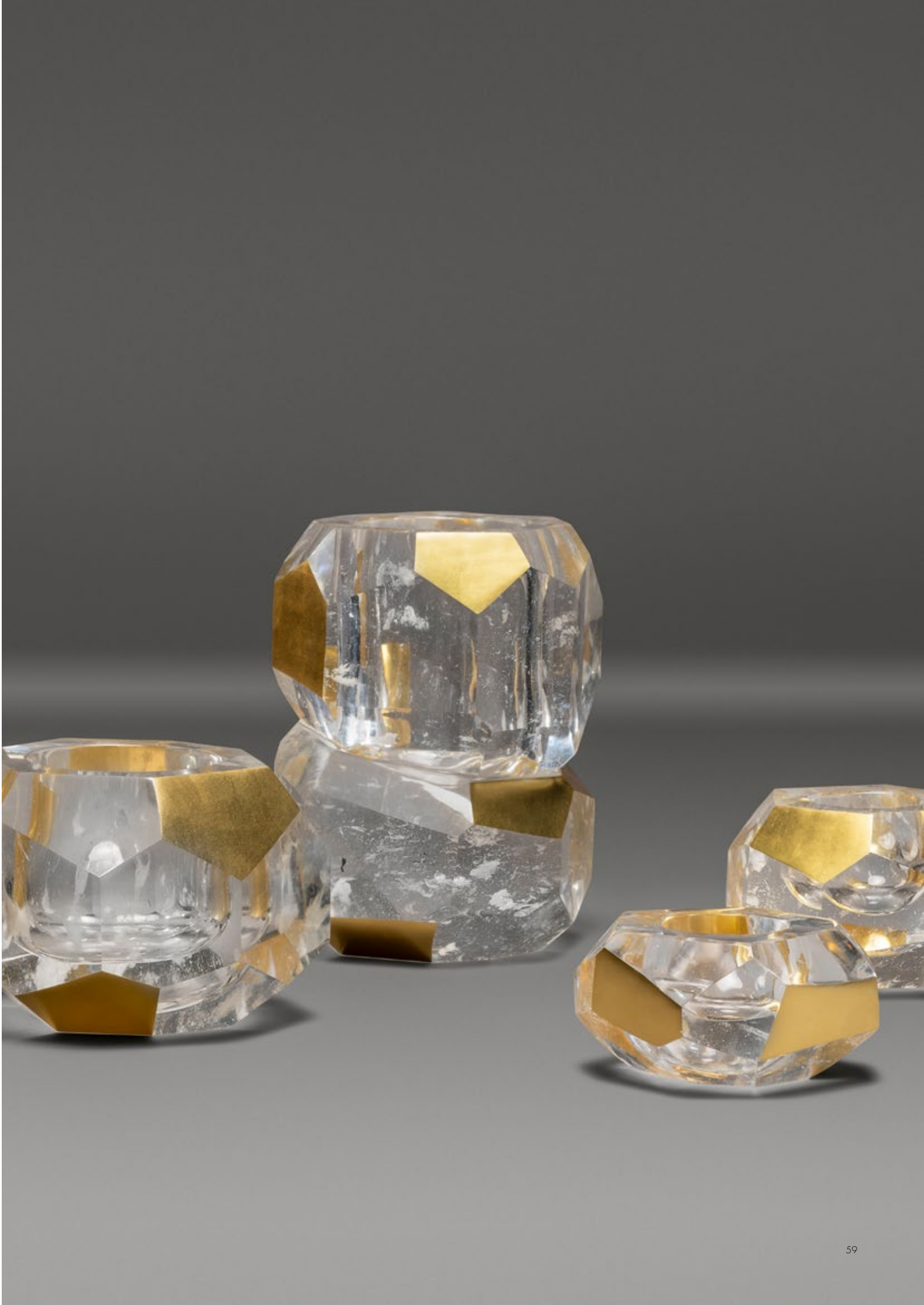
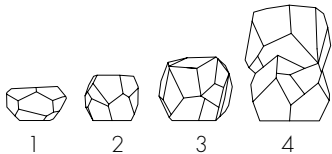
Dia 19 cm H 34 cm



Coupé Vessels

Sculptural objects that contain and emit light; these large deeply faceted objects have been hewn from rock crystal blocks rich with inclusions. Odd faces have been gilded to bring a vivid contrast to the ice-like clarity of the quartz.

| | | |
|-------------|-------------------------|----------------------|
| 1. FG000225 | Dia 6 ¼ in Dia 16 cm | H 3 in H 7.5 cm |
| 2. FG000224 | Dia 6 ¾ in Dia 17 cm | H 4 in H 10 cm |
| 3. FG000223 | Dia 8 ¾ in Dia 22 cm | H 5 ½ in H 14 cm |
| 4. FG000222 | Dia 8 in Dia 20 cm | H 10 in H 25.5 cm |





Scallop Bowls

A pair of bowls that represent the beautiful curves and forms of natural shells. Finished with a patina that is applied by fire and hand that takes 6 days to build up.

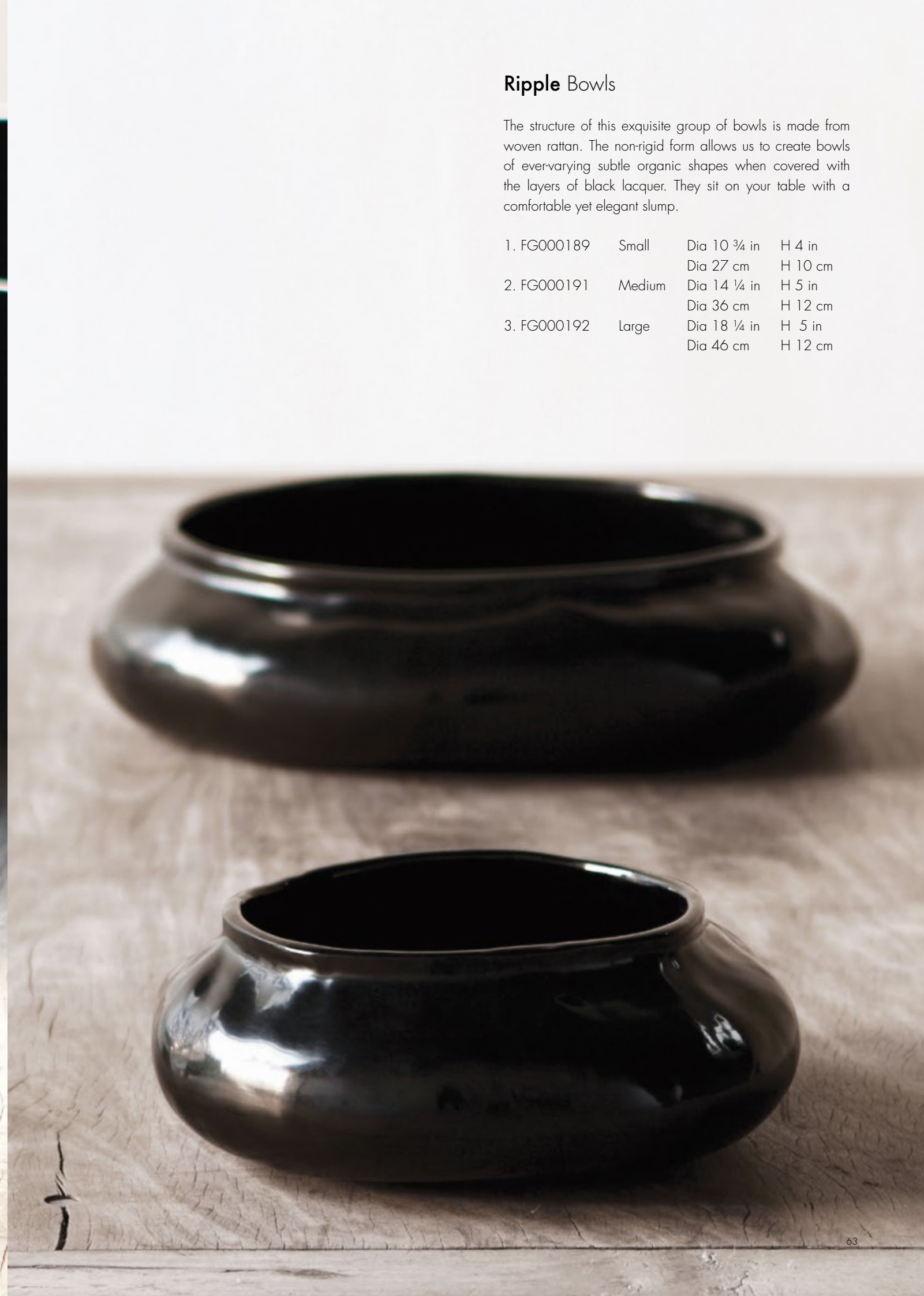
| | | | |
|-------------|-------|-----------------------|--------------------|
| 1. FG000184 | Small | W 6 ½ in W 16.5 cm | H 3 ¼ in H 8 cm |
| 2. FG000185 | Large | W 7 ¼ in W 18 cm | H 4 in H 9.5 cm |



Ripple Bowls

The structure of this exquisite group of bowls is made from woven rattan. The non-rigid form allows us to create bowls of ever-varying subtle organic shapes when covered with the layers of black lacquer. They sit on your table with a comfortable yet elegant slump.

| | | | |
|-------------|--------|--------------------------|-------------------|
| 1. FG000189 | Small | Dia 10 ¾ in Dia 27 cm | H 4 in H 10 cm |
| 2. FG000191 | Medium | Dia 14 ¼ in Dia 36 cm | H 5 in H 12 cm |
| 3. FG000192 | Large | Dia 18 ¼ in Dia 46 cm | H 5 in H 12 cm |



Hammered Bowls

Perfect spheres lined with pure gold leaf create a vessel that seems to emit its own light. This design won the UNESCO award for contemporary craft excellence and is an iconic Alexander Lamont design.

| | | |
|-------------|---------------------------|-----------------------|
| 1. FG000133 | Dia 3 in Dia 7.5 cm | H 2 ¼ in H 5.5 cm |
| 2. FG000132 | Dia 5 in Dia 12.5 cm | H 3 ¼ in H 8 cm |
| 3. FG000131 | Dia 6 in Dia 15 cm | H 4 ¼ in H 10.5 cm |
| 4. FG000129 | Dia 7 ¾ in Dia 19.5 cm | H 5 ¼ in H 13 cm |
| 5. FG000136 | Dia 10 in Dia 25 cm | H 7 in H 17.5 cm |
| 6. FG000135 | Dia 12 in Dia 30.5 cm | H 8 ½ in H 21.5 cm |





Rock Crystal Libation Cups

A libation is the ritual act of pouring a liquid as an offering. Inspired by the rhino horn libation cups of China, these rock crystal bowls have softly curving forms that give grace to the clarity and inclusions of rock crystal.

| | | | |
|-------------|--------|----------------------|--------------------|
| 1. FG000221 | Small | W 3 ½ in W 8.5 cm | H 2 in H 5 cm |
| 2. FG000220 | Medium | W 3 ½ in W 8.5 cm | H 3 in H 7.5 cm |
| 3. FG000219 | Large | W 4 ½ in W 11 cm | H 4 in H 10 cm |





1. **Vitrum Lidded Jarlet**
2. **Vitrum Lidded Jar**

Rock crystal jars, rich with inclusions and thick clarity, are ground inside and out using a special tool created especially for every form. The crystal is sent to Southern Thailand where each jar has an individual woven lid made from the famously fine Yan Lipao grass. The unique combination of materials creates a luscious object to serve as both storage and decoration.

| | | | |
|-------------|-------|-------------------------|---------------------|
| 1. FG000217 | Small | Dia 4 ½ in Dia 11 cm | H 4 ¾ in H 12 cm |
| 2. FG000218 | Large | Dia 5 ½ in Dia 14 cm | H 6 in H 15 cm |



Verglas Rock Crystal Tumblers

Rock crystal carved to create handsome whisky tumblers that have gentle variations in their thickness and profiles to make distinctive and unique drinking vessels that are a pleasure to have and to hold. Sold as a boxed pair.

FG004234 Dia 3 ¼ - 3 ¾ in H 3 ¼ in
Dia 8.5 - 9.5 cm H 8.5 cm



Verglas Rock Crystal Wine Glasses

Wine glasses carved from solid rock crystal to create undulating luxurious drinking vessels that call to mind drinking goblets of antiquity while at the same time being strikingly contemporary and simple. Sold as a boxed pair.

FG004235 Dia 3 ¾ - 4 ½ in H 3 ¼ in
Dia 9.5 - 11.5 cm H 8.5 cm



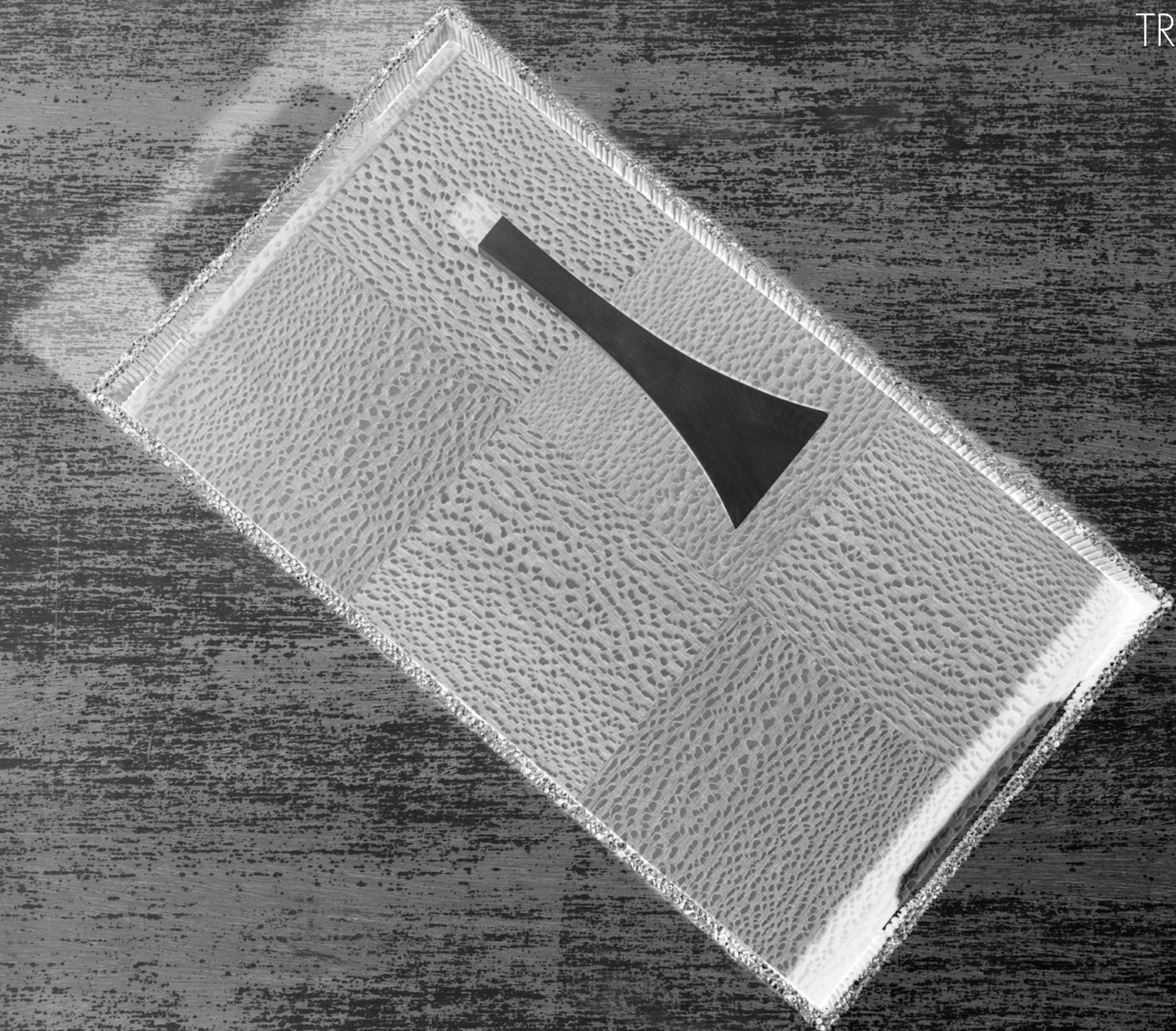
Verglas Ice Bucket

A mighty chunk of rock crystal has been carved by hand to create an ice bucket seemingly made from solid ice. The rough cut form and inclusions inherent in cristal de roche give a wonderful elemental aspect to the chicest of ice buckets.

FG004233 Dia 7 ¼ in H 6 in
Dia 18.5 cm H 15 cm



TRAYS



Paglia Square Tray

Gently uneven and textured edges in cast brass delicately reflect the mottled texture of the wonderful Brazilian Lacewood base.

| | | | |
|----------|-----------|-----------|--------|
| FG004224 | W 12 ½ in | D 12 ½ in | H 2 in |
| | W 32 cm | D 32 cm | H 5 cm |



Paglia Long Tray

A long tray made from straw and then cast in brass to make irregular sculptural edges and handles. Within is a floor of exotically-figured lacewood from Brazil that brings a subtle silkiness to the pattern.

| | | | |
|----------|---------|-----------|----------|
| FG004225 | W 20 in | D 11 ½ in | H 1 ½ in |
| | W 51 cm | D 29 cm | H 4 cm |





Bristol Tray

An elegant tray made from natural parchment stretched over a curving form and supported by brass sides and legs. Walnut veneer finishes beneath. The tray is a contemporary form that works the subtle texture and tone of parchment.

| | | | |
|----------|-----------|-----------|----------|
| FG004223 | W 21 ¾ in | D 11 ¾ in | H 2 ¾ in |
| | W 55 cm | D 30 cm | H 7 cm |





Lagoon Trays

Important trays with flowing coral sides. The evocative openwork panels encircle the base of the tray that is made from lacquered natural black Palmwood.

| | | | | |
|-------------|-------|----------------------|----------------------|---------------------|
| 1. FG000232 | Small | W 11 ¾ in W 30 cm | L 21 ¼ in L 54 cm | H 4 ½ in H 11 cm |
| 2. FG000233 | Large | W 15 in W 38 cm | L 28 ½ in L 72 cm | H 4 ½ in H 11 cm |





Quatrefoil Trays

Distressed shagreen contrasts two natural tones of soft chocolate and ivory. Cast handles detail the tray which is made from the powerfully grained Sathorn Wood.

| | | | | |
|-------------|-------|----------------------|----------------------|----------------------|
| 1. FG000241 | Small | W 11 ¾ in W 30 cm | L 17 ¾ in L 45 cm | H 3 ¾ in H 9.5 cm |
| 2. FG000242 | Large | W 15 ¾ in W 40 cm | L 23 ¾ in L 60 cm | H 3 ¾ in H 9.5 cm |



BOXES



Meso Boxes

Boxes inspired by the flattopped pyramid form of the Mayan temples Alexander saw aged 16 on a wonderful trip to Mexico. The meticulously finished inlaid straw marquetry and abalone shell is applied in geometric patterns that create strong dimensions alongside the tapering sides. This divine box is made from Walnut and raised on silvered brass feet.

| | | | |
|-------------|--------|----------|-----------|
| 1. FG004226 | Square | W 7 in | H 8 in |
| | | W 18 cm | H 20.5 cm |
| 2. FG004227 | Long | W 6 ¼ in | H 7 ¾ in |
| | | W 16 cm | H 19.5 cm |





Mantle Boxes

Mantle – the sea bed, caught and dappled by the sun in the shallows, the light changing as you move around it. To achieve this unique sense of depth, layers of straw have been applied and then rubbed through to reveal the lower surfaces reflecting beneath. This special technique is applied onto Walnut cube boxes raised on silvered feet. On a coffee table, shelf or vanity, these forms will seduce eyes and hands and conversation.

| | | | |
|-------------|--------|---------------------|-----------------------|
| 1. FG004228 | Small | W 4 ¾ in W 12 cm | H 5 in H 12.5 cm |
| 2. FG004229 | Medium | W 6 in W 15 cm | H 6 ¼ in H 16 cm |
| 3. FG004230 | Large | W 7 in W 18 cm | H 6 ¾ in H 17.5 cm |





Reef Boxes

Cast boxes that are both sculpture and functional objects. The knots and tightly bound aspect expresses a 'fetishistic' power - the sense that the object has been animated.

| | | | |
|-------------|-------|-----------------------|-----------------------|
| 1. FG000177 | Small | W 7 ½ in W 19 cm | H 6 ¼ in H 15.5 cm |
| 2. FG000178 | Large | W 6 ¼ in W 15.5 cm | H 8 in H 20 cm |





Cove Boxes

Boxes that combine fine woodwork and metal casting skills. Folds of cast brass, each topped by a totemic 'handle' sit on finger-jointed boxes of solid oiled walnut wood.

| | | | |
|-------------|--------|-----------------------|-----------------------|
| 1. FG000229 | Small | W 4 ¾ in W 12 cm | H 7 ¼ in H 18.5 cm |
| 2. FG000230 | Medium | W 6 ¼ in W 15.5 cm | H 9 in H 22.5 cm |
| 3. FG000231 | Large | W 8 ¼ in W 20.5 cm | H 7 ½ in H 19 cm |





Steamer Boxes

Solid wood is finely carved into shell boxes that are covered with layer upon layer of natural black lacquer inside and out.

| | | | |
|-------------|-------|-----------|-----------|
| 1. FG000187 | Small | W 8 in | H 4 in |
| | | W 20.5 cm | H 10 cm |
| 2. FG000188 | Large | W 11 ¾ in | H 5 ¾ in |
| | | W 29.5 cm | H 14.5 cm |



Masa Studio Box

Opium Lacquer Shagreen Red

An important large box in Opium Lacquer Shagreen with gilded handle edges. The interior is finished in Fine Crackle gesso with an interior parchment tray.

| | | | |
|----------|-----------|-----------|-----------|
| FG000240 | W 13 ¾ in | L 17 ¾ in | H 4 ½ in |
| | W 35 cm | L 45 cm | H 11.5 cm |





Masa Studio Box

Antique Ivory Tusk

This box is covered with a material of our own creation: Antique Ivory Tusk gesso. The handle edges are gilded. The interior is lined with pure sienna lacquer and the inner tray is parchment.

| | | | |
|----------|-----------|-----------|-----------|
| FG000190 | W 13 ¾ in | L 17 ¾ in | H 4 ½ in |
| | W 35 cm | L 45 cm | H 11.5 cm |

SCULPTURE



Raven

Ravens are the symbols of London. On a visit to London when I was about 6 years old, I went to the Tower with my parents and was pecked by a Raven. It became a bird of mythical and actual ominousness. Many years later I have tried to capture a less brutal aspect of the Raven, its head slightly cocked, the black patina softened with Japanese powders.

| | | | |
|----------|------------|---------|------------|
| FG000173 | W 4 1/2 in | L 15 in | H 7 3/4 in |
| | W 11 cm | L 38 cm | H 19.5 cm |



Toad

The Japanese word for toad also means 'to return' and so the Japanese toad has become a symbol of hope and good fortune.

| | | | |
|----------|-----------|-----------|----------|
| FG000144 | W 11 ¾ in | L 18 ¾ in | H 9 ½ in |
| | W 30 cm | L 47.5 cm | H 24 cm |





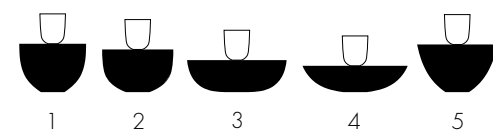
CANDLEHOLDERS



Float Candleholders

With their smooth spherical forms these candleholders appear to have drifted onto the table where they gently float above the surface. The five forms sit beautifully together, subtly different in scale, made with honed black marble and solid turned brass. The Float Candleholders are smooth to the touch and reassuringly weighty.

- | | | |
|-------------|---------------------------|----------------------|
| 1. FG005567 | Dia 4 in Dia 9.5 cm | H 4 ½ in H 11 cm |
| 2. FG005568 | Dia 4 in Dia 10 cm | H 4 in H 10 cm |
| 3. FG005569 | Dia 5 ½ in Dia 14 cm | H 3 ½ in H 8.5 cm |
| 4. FG005570 | Dia 5 ½ in Dia 14 cm | H 3 ¼ in H 8 cm |
| 5. FG005571 | Dia 4 ½ in Dia 11.5 cm | H 4 ½ in H 11 cm |

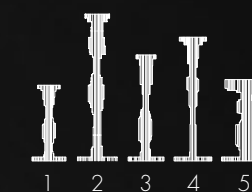




Paglia Candleholders

A group of five cast candleholders inspired by the shapes and contours of the thatched roofs that are found throughout England. The edges jut and overlap at the eaves where the birds live. When lit these sculptures are textured beautifully reflecting the flame when in a group.

| | | |
|-------------|---------------------------|------------------------|
| 1. FG004134 | Dia 3 ½ in Dia 9 cm | H 7 ¾ in H 20 cm |
| 2. FG003699 | Dia 4 ¼ in Dia 10.5 cm | H 15 ¾ in H 40 cm |
| 3. FG003697 | Dia 3 ¾ in Dia 9.5 cm | H 11 in H 28 cm |
| 4. FG003698 | Dia 4 in Dia 10 cm | H 12 ¾ in H 32.5 cm |
| 5. FG003700 | Dia 5 ¼ in Dia 13.5 cm | H 8 ½ in H 21.5 cm |



Orb Candleholders

Three candleholders made with exquisite rock crystal, rich with inclusions and raised on bulbed bronze feet. Their curvaceous bowls have been carved to hold taper and pillar candles. As vessels of light, rock crystal refracts and reflects most elegantly as in the ballrooms of old. The inspiration for these forms is the Japanese Giboshi; an ornament used on bridges that resembles an onion. The delightful spherical form lends itself to a candleholder – with the idea also that the light would show the path across the bridge.





Orb Candleholders

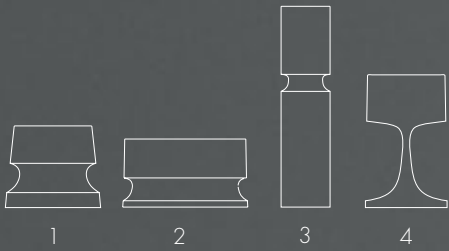
1. FG004096 Dia 6 ¾ in
Dia 17 cm
3" pillar candle
2. FG004095 Dia 5 ¼ in
Dia 13.5 cm
22 mm standard taper candle
3. FG004094 Dia 3 in
Dia 7.5 cm
2.5" pillar candle



Crucible Candleholders

Perfect, smooth reflective dishes hold naked flames within deeply textured cast table sculptures.

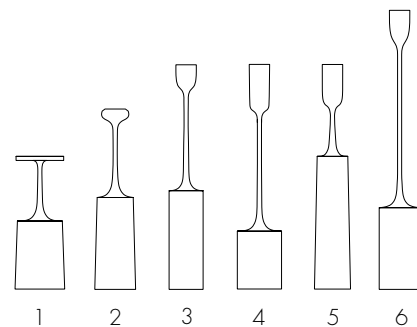
| | | |
|-------------|---------------------------|--------------------------|
| 1. FG000199 | Dia 5 1/2 in Dia 14 cm | H 4 3/4 in H 12 cm |
| 2. FG000200 | Dia 7 1/4 in Dia 18 cm | H 4 in H 10 cm |
| 3. FG000201 | Dia 2 3/4 in Dia 7 cm | H 11 3/4 in H 29.5 cm |
| 4. FG000202 | Dia 4 3/4 in Dia 12 cm | H 7 3/4 in H 19.5 cm |



Contrepoids Candlesticks

The original idea for these six candlesticks came from the English polished brass weights that were used with traditional scales. The candlesticks are heavy and have a lovely handle and form, with the delicate necks rising upwards to the flame.

- | | | | |
|---|--|---|--|
| 1. FG000197 FG003570 FG003571 Dia 3 in Dia 7.5 cm | Polished Brass Black Patina Nickel Plate H 7 ¾ in H 19.5 cm | 4. FG000195 FG003566 FG003567 Dia 2 ½ in Dia 6.5 cm | Polished Brass Black Patina Nickel Plate H 13 in H 33 cm |
| 2. FG000198 FG003572 FG003573 Dia 2 ½ in Dia 6 cm | Polished Brass Black Patina Nickel Plate H 10 ½ in H 26.5 cm | 5. FG000196 FG003568 FG003569 Dia 2 ¼ in Dia 5.5 cm | Polished Brass Black Patina Nickel Plate H 13 in H 33 cm |
| 3. FG000194 FG003564 FG003565 Dia 2 in Dia 5 cm | Polished Brass Black Patina Nickel Plate H 13 in H 33 cm | 6. FG000193 FG00356 FG003563 Dia 2 ½ in Dia 6 cm | Polished Brass Black Patina Nickel Plate H 16 ¼ in H 41 cm |

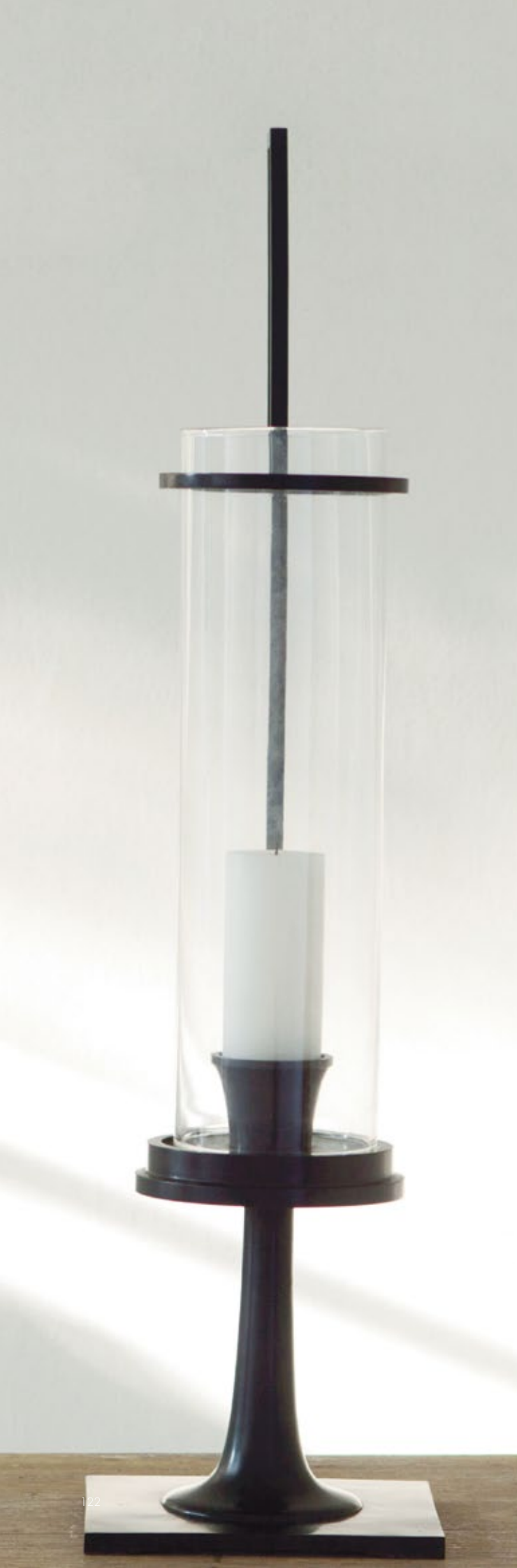




Contrepoids Candlesticks

Slender, tapering, sculptural forms that raise candles high to create beautiful light on dining tables and elegant shapes on consoles and coffee tables.





Keys Hurricane

The Keys Hurricane can be used indoors or out. It is cast in six separate parts to create the geometric yet sinuous form. It is finished in a dark patina.

| | | | |
|----------|---------|-----------|---------|
| FG000143 | W 10 in | L 12 ¾ in | H 39 in |
| | W 25 cm | L 32 cm | H 99 cm |



Alexander Lamont's collections are available in our London and Bangkok showrooms and through our network of representatives and agents in the US, Europe, Asia and Middle East. Contact details can be found [here](#)

For other territories please contact us directly :
enquiries@alexanderlamont.com

www.alexanderlamont.com



