



ALEXANDER
LAMONT

LE MUR

LE MUR

The Alexander Lamont wallcovering collection



ALEXANDER
LAMONT

WHERE TRADITION EMBRACES THE AVANT GARDE

Alexander Lamont's collections are made to fall in love with, to be treasured and touched and to bring to their owners a lifetime of communion with the great craft traditions and a unique design sensibility.

The Le Mur collection for walls allows designers to infuse spaces with exquisite handwork, texture and dimensionality. Vertical surfaces are brought to life with luscious straw marquetry, precious shagreen, smooth burnished gesso and shimmering mica. The finished works express a particular approach to innovation in design and technique; one that uncompromisingly pushes the boundaries of rare and hard-won traditions, maintaining exquisite quality while bringing contemporary, fresh ideas to long adored materials.



STUDIO COLLECTION

Innovations in colour, tone, texture and ambience bring gorgeous natural materials to sophisticated new levels. Contemporary designs inspired by nature and the rituals of craft use straw marquetry in fresh ways to create painterly, mosaic, linear, spatial or textural effect, blurring the boundaries between art and design. Pattern and direction are worked to make subtle trompe l'oeil onto vertical surfaces that appear alive with movement and play - light moving across emerging shapes or sweeping curvilinear lines.



THE GENTLE ART OF STRAW MARQUETRY

The decorative art of straw marquetry was brought to prominence during the early 20th century. Today this seductive, versatile and humble material is finding a strong place in great interior projects as its unique lustrous and reflective surface brings a sense of craftsmanship, artistry and quality to traditional as well as minimal spaces. This material turns a wall, niche, cabinet or table into a shimmering, textured and alluring presence in the room, a bejeweled surface that plays with and reflects the light like no other.

Alexander Lamont has worked with straw marquetry since 2005 becoming the largest producer in the world. Our workshops use straw marquetry to make beautifully detailed cabinets, tables, mirror frames and lamp bases, and we have produced hundreds of square metres of wall panels in straw marquetry for custom residential and commercial projects around the world. The Le Mur collection of wall panels in natural materials offers an array of colours, finishes and patterns in straw marquetry that are evolving and developing all the time and can be customized to fit any room.

Straw is a subtle material that requires every person involved to work to the same colour palette, width of straw and strength of inlay. The process is entirely done by hand in our workshops from cutting and trimming the raw straw, to dyeing and colour matching, splitting and flattening to make ribbons of straw and finally the intricate piece-by-piece inlay that creates the final pattern. The workshop uses only hand tools and water-based adhesives and dyes that have been used for centuries. Enormous patience and quality control comes in the preparation of the straw and the final finish of this fabled material.



Escarpa I

Escarpa is an evocation of planes that move in the light. A cliff face; fractured crystal but softened by the warmth and detailing of straw marquetry that brings a feeling of silk billowing in the wind. The artistry and movement of Escarpa is brought to life by the magical optical effect of hundreds of individually applied straw ribbons creating three-dimensional illusions and an intensity of colour that illuminates the most elegant spaces. Designed by Antonio da Motta Leal for Alexander Lamont.

Panels 32" x 32" (81.3cm x 81.3cm)
Available in Ebony and Burnished Metals tones.







Tortuga

Tortuga exudes the natural beauty and genius of the tortoise shell. Warm contrasting elements move slowly, creating a bold contemporary surface.

Panels 32" x 32" (81.3cm x 81.3cm)



Embers I, Ebony

Embers is a unique creation from the Alexander Lamont workshops: layers of straw marquetry are inlaid in opposing directions and cut and rubbed through to allow colour and light to move and shine - seemingly from within. Embers comes in three natural tones : Ebony, Coral and Flax.

Panels 24"x32" (61cm x 81.3cm)





Embers II, Coral





Embers III, Flax





Havana, Ebony

Havana combines warm tones of bronze, ebony and burnished neutrals to create a tailored pattern of shimmering lines that can be placed in a vertical or horizontal alignment. Havana is available in three colourways.

Panels 24" x 24" (61cm x 61cm)

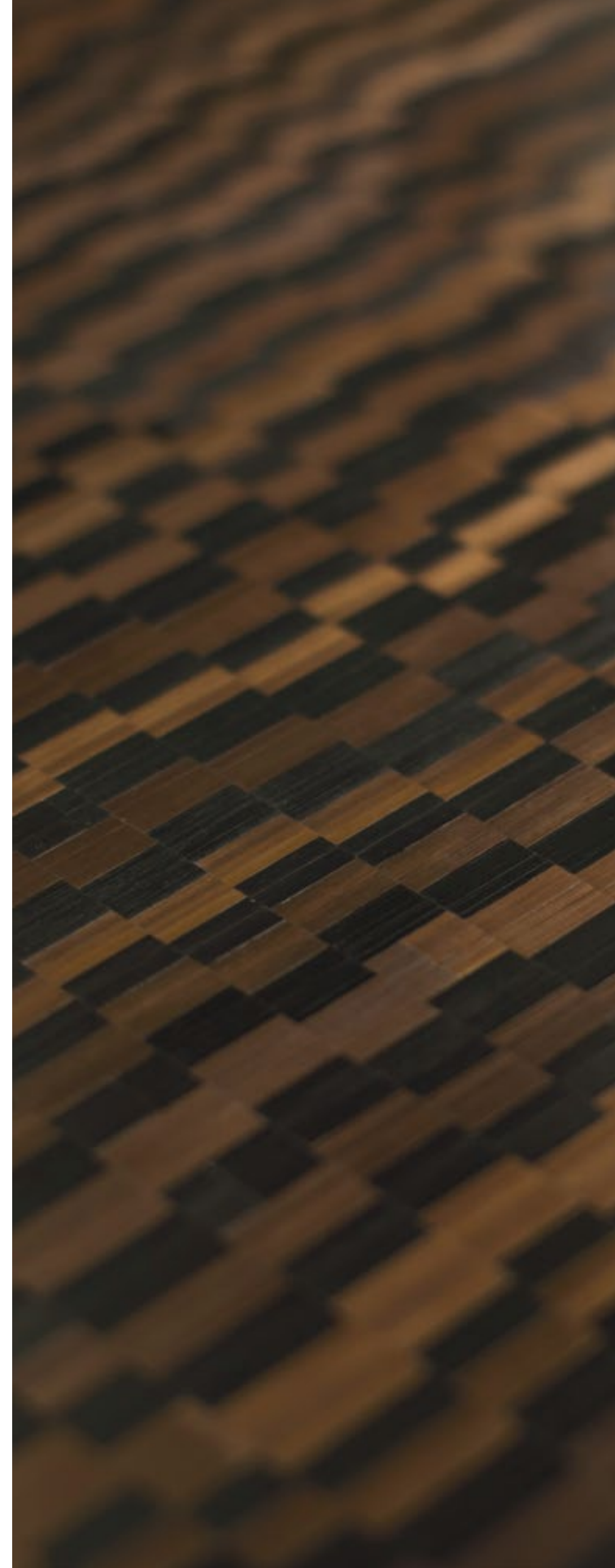


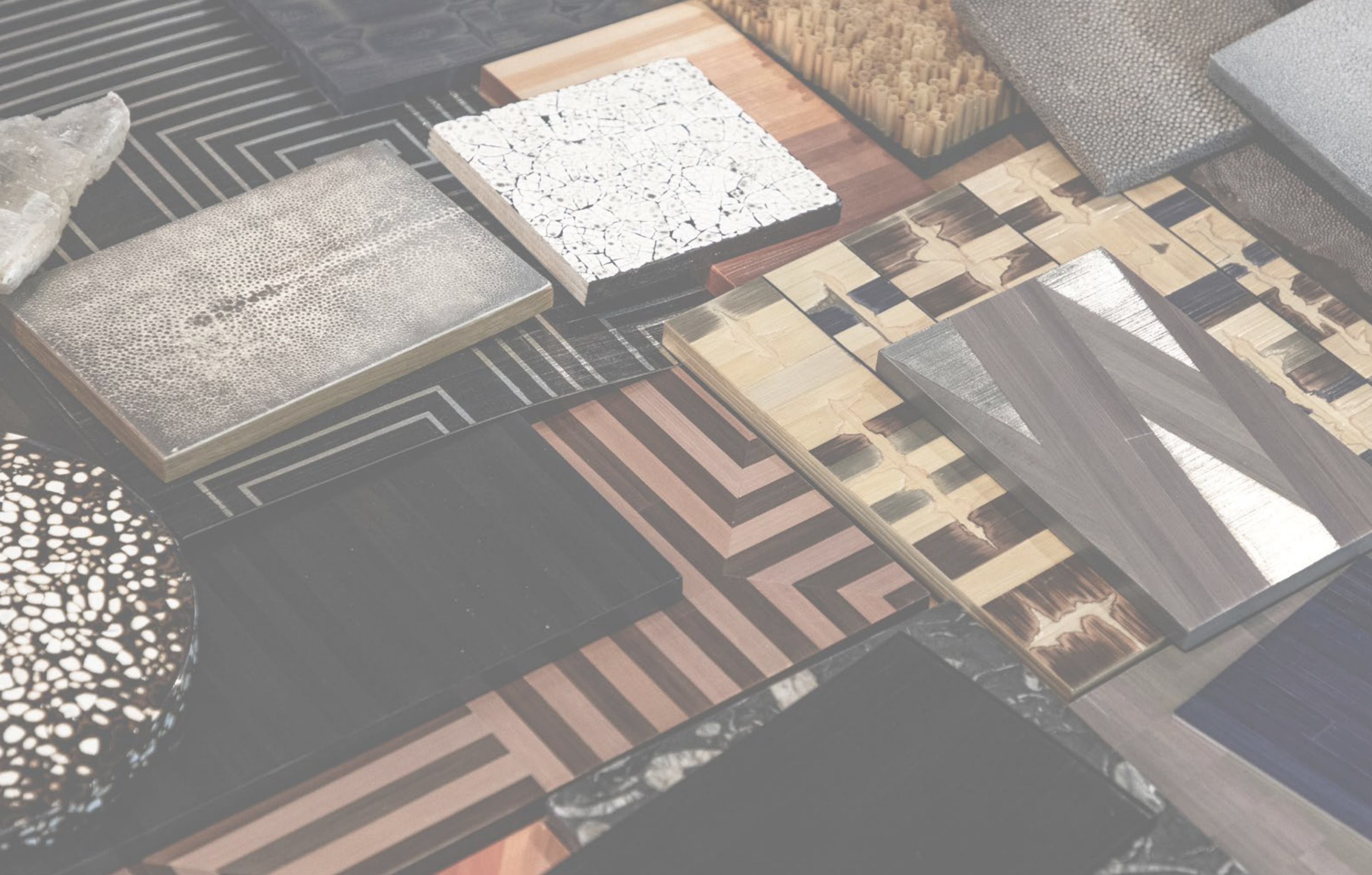
Havana, Burnished Metals





Havana, Cigar





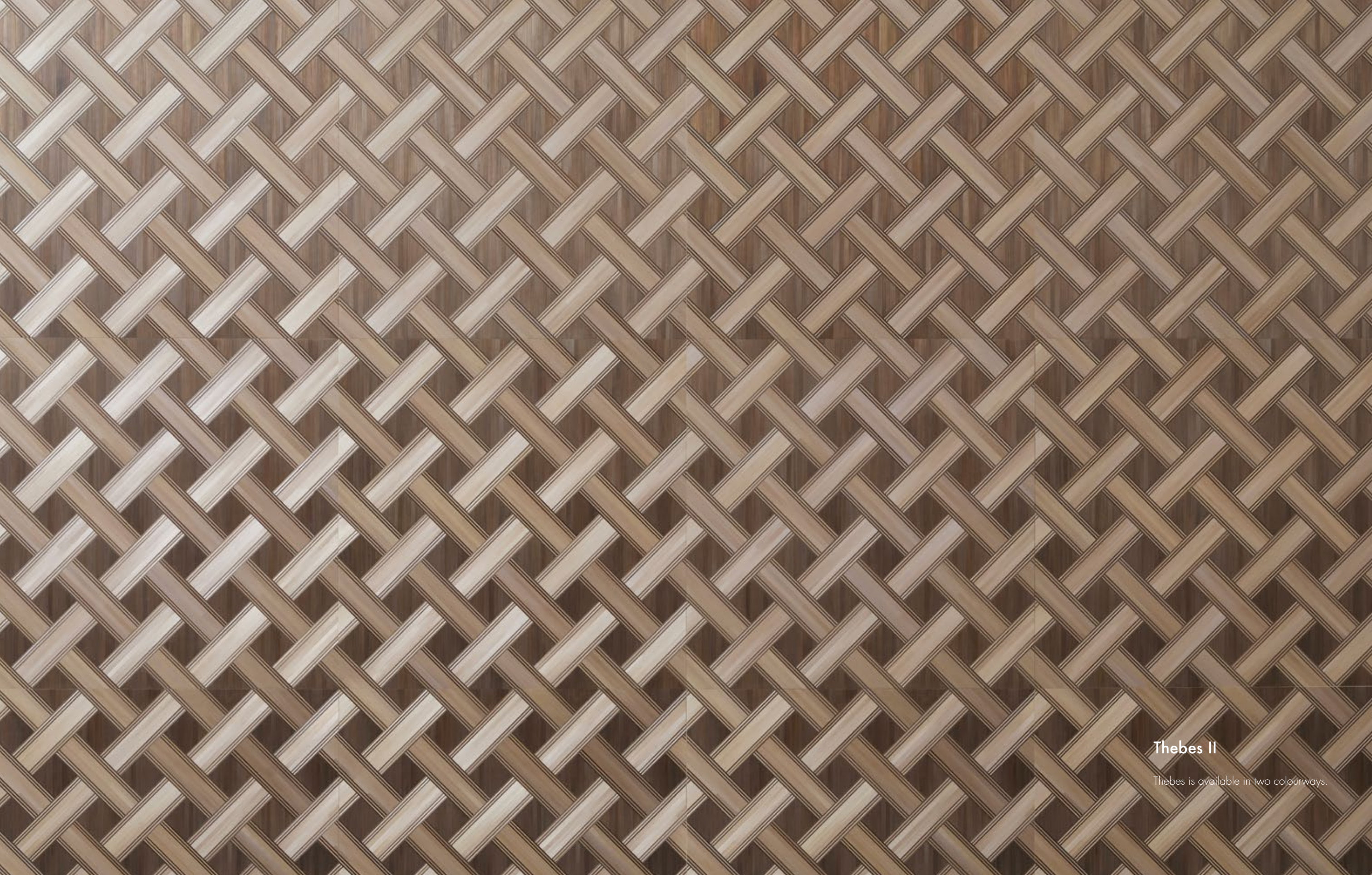


Thebes I

Inspired by African textiles and deriving its name from the oldest city in Africa, Thebes conveys a simple woven pattern of shimmering light in light warm tones or rich earth tones.

Panels 32" x 32" (81.3cm x 81.3cm)





Thebes II

Thebes is available in two colourways.



Lago I

Lago was inspired by the view of water seen through the lines of trees or reeds beside a lake or a calm sea - how light reflects and colours change. The pattern creates depth and texture in different tones - blues, neutrals, blacks, metallics to create a shimmering moment.

Panels 32" x 32" (81.3cm x 81.3cm)



Lago II

Lago is available in three colourways.





Lago III

Lago in shimmering ebony and silver.

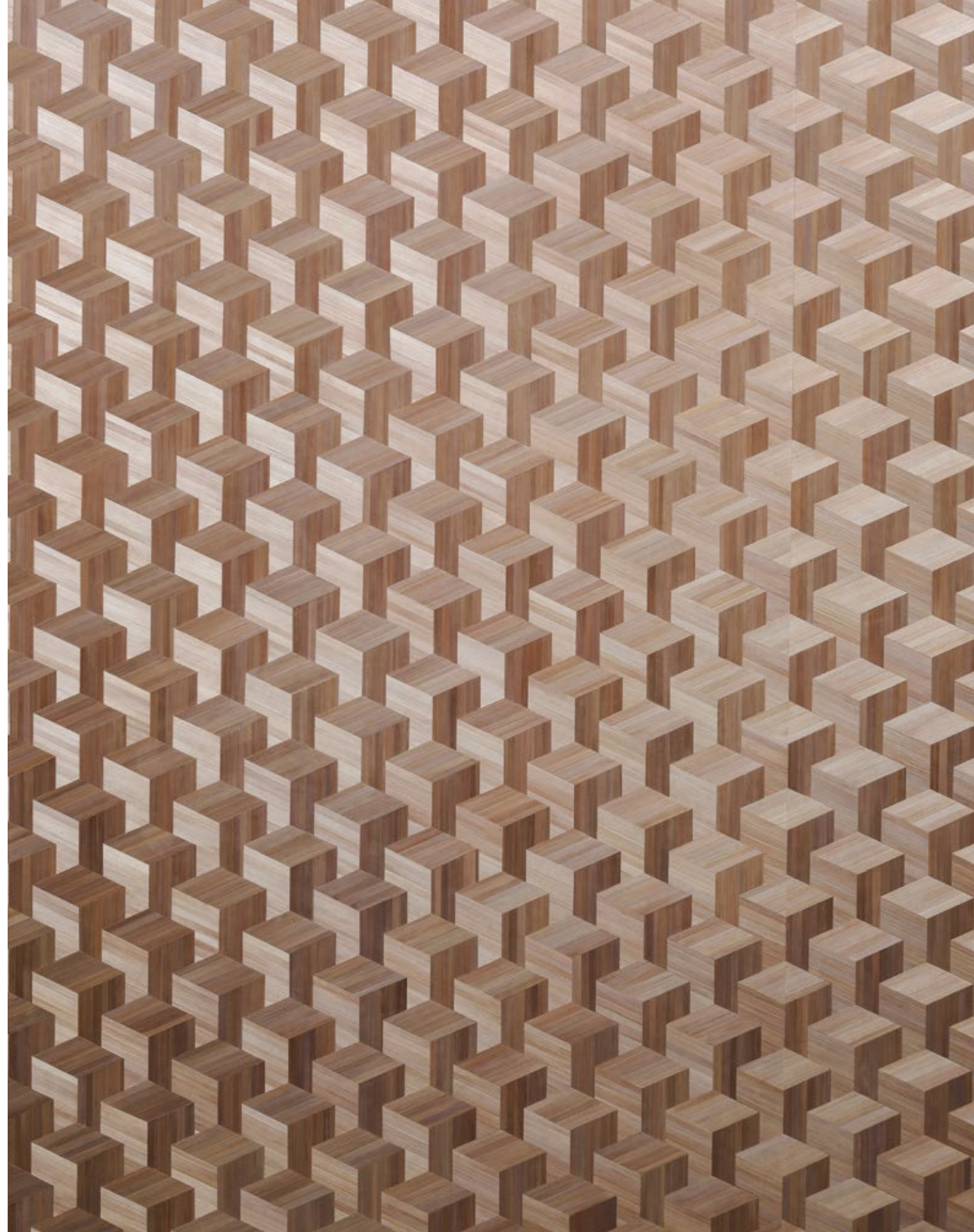




Stepping Stones

Rising and falling in natural tones and changing light, Stepping Stones is a composition of abstract dimensions that brings delightful form to vertical surfaces. Stepping Stones can be made with contrasting elements but is also striking in a single tone - light brings the cubes to life.

Panel 24" x 24" (61cm x 61cm)





Pierrot

Pierrot is a dancing arrangement of musical whimsy and silent mime that moves in the light between shaded tones of taupe and chocolate.

Panel 24" x 24" (61cm x 61cm)

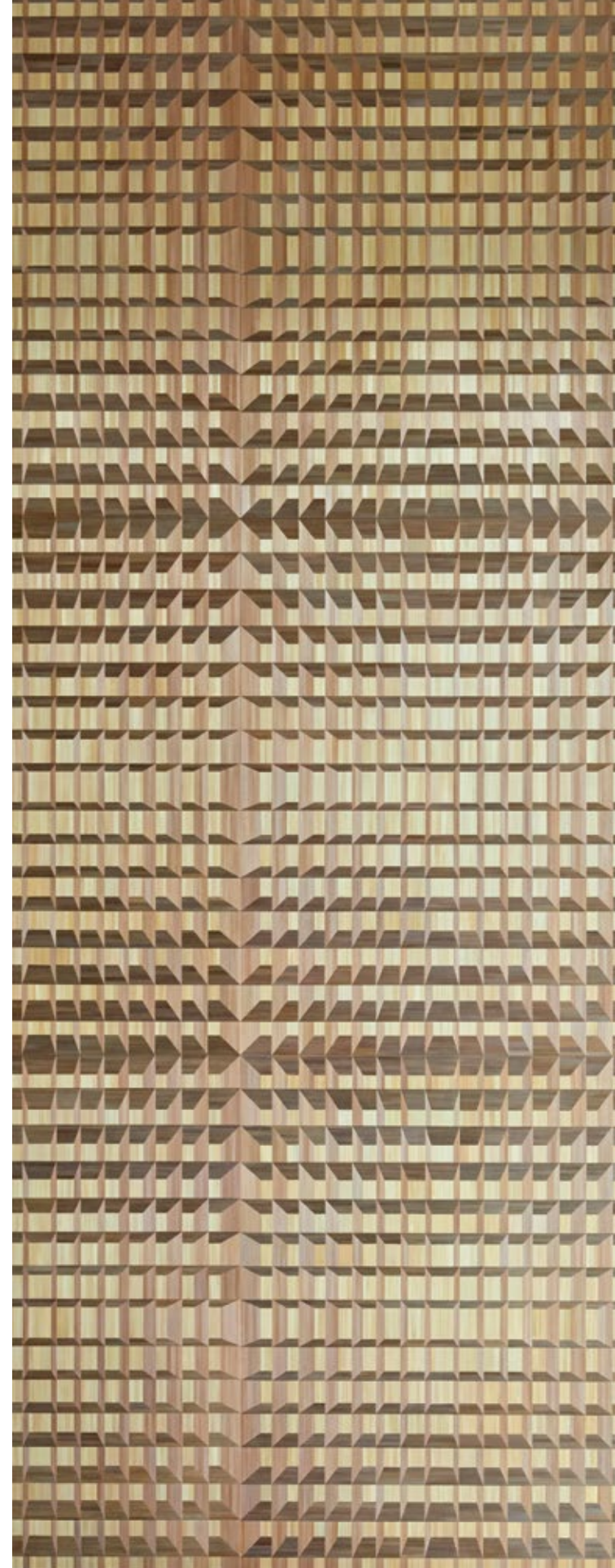




Soleil

Sun shining through a lattice was the inspiration for Soleil; the gorgeous reflectivity of straw allows different plains to hold light or shine forth. The linear form gives a sense of depth looking through to an evening sun.

Panel 24" x 32" (61cm x 81.3cm)





Tashi I & II

Tashi is inspired by the traditional textiles of the himalayas; soft repeating woven lines are reimagined in lustrous straw and a wonderful luminosity and sense of depth emerges. Contrasting shell and colours are inlaid into the pattern like 'loose threads' that amuse and catch the eye.

Panel 24" x 24" (61cm x 61cm)





Grove

Tall bamboo-like spires in varying tones have been interwoven with fine polychrome details that give a subtle crafted pop to this simple natural design.

Panel 24" x 32" (61cm x 81.3cm)





Drift I & II

A surface of lines that rises, swells and falls like the wake of a ship. Corrugated and gliding, Drift makes gentle patterns that mix tonality and light creating a contemporary artwork for rooms and accent walls. Available in Verdigris and Wisteria.

Panels 24" x 24" (61cm x 61cm) are made in 2 patterns that will be delivered in equal quantities according to project requirements.





Hide and Seek

Complex yet playful, Hide and Seek takes the linearity of Erasmo Figini's original artwork and adds a dash of colour. The ruby red straw lines contrast with the earthier tones of bronze and beige to create a vibrant graphical surface.

Panels 24" x 24" (61cm x 61cm) are made in 2 patterns that will be delivered in equal quantities according to project requirements.





Tryst I & II

Inspired by the mosaics and tiles of ancient Rome, Tryst has a classical aspect alongside a contemporary sense due to the lightness and reflectivity of straw. The feeling of shapes emerging and plains receding creates a wonderfully alluring drama. Available in a natural palette or in tones of Wisteria and Verdigris.

Panels 24" x 24" (61cm x 61cm) are made in 2 layouts to connect perfectly that will be delivered in equal quantities according to project requirements.



Sonja I & II - Formal Composition

Inspired by the works of Sonia Delaunay, this enigmatic design by Anotnio da Motta Leal for Alexander Lamont presents large fluid shapes and lines within curvilinear fields of rich natural colour. Sonja is available in two colourways, the first a blend of warm taupes and browns and the second a mix of vibrant greens and yellows.

Panels 24" x 24" (61cm x 61cm) are made in 4 patterns that will be delivered in equal quantities according to project requirements. See panel pages at back for details.



Sonja I & II - Flowing Composition

The Sonja design is composed of 4 panels of 24" x 24" (61cm x 61cm) that then repeat.
See panel pages at back for details.



METALLICS COLLECTION

Offering surfaces that exude elegance with their luminous reflectivity and calm luxe the Metallics Collection uses precious leaves in contemporary gold and warm silver.

These are laid as a sheet over natural straw or applied in lines to create an exquisite contemporary surface with an ever changing effect as the light meets the subtle pattern beneath.





Argento

Argento exudes a wonderful 'warm coolness' revealing the straw pattern beneath.

Argento is made in Ligne and Étoile patterns
Panels are 12" x 12" (30.5cm x 30.5cm) or
24" x 24" (61cm x 61cm)



Mercury Gold

Plains of straw in Ligne and Étoile sunbursts are covered with pure gold leaf creating an exquisite dance of warmth and reflectivity.

Mercury Gold is made in Ligne and Étoile patterns
Panels are 12" x 12" (30.5cm x 30.5cm) or
24" x 24" (61cm x 61cm)





Labirinto I

The Labirinto pattern was created by famed Como textile designer Erasmo Figini for Alexander Lamont. Labirinto I layers the natural vibrancy of straw marquetry with fine lines of hand-applied Mercury Gold leaf. As light or the viewer moves, different iterations of the design become visible: a tribal textile appears with strong archaic lines that then fades as the delicate lines of the gold appear creating a precise graphic sensibility.

Panels 24" x 24" (61cm x 61cm) are made in 2 patterns that will be delivered in equal quantities according to project requirements.





Labirinto II

Labirinto II brings the colours of night together in a sensual masculine surface. Ebony straw and silver leaf play together in nesting lines and backgrounds of shadow and light.

Panels 24" x 24" (61cm x 61cm) are made in 2 patterns that will be delivered in equal quantities according to project requirements.





CLASSICS COLLECTION

The Le Mur Classics are a collection of wall panels in straw marquetry, gesso, mica and shagreen in simple designs and elegant colourways. Alexander Lamont's signature materials and finishes are presented in their purest form. The Classics collection creates an understated atmosphere enhanced by the texture, depth and quiet luxe of crafted precious materials.



Venice, Deep Amber

The epitome of glamour and refinement, Venice panels are statements of old world craftsmanship and elegance. Like an ancient mirror or surface of nacre, light shines and shimmers and gleams within Deep Amber warmth. Made by hand piece-by-piece, small mica mineral panels are composed into walls that create a uniquely beautiful atmosphere.

Panels 24" x 32" (61cm x 81.3cm)





Venice, Pewter

Venice Pewter panels are mirror-like surfaces that shimmer and gleam within cool pewter tones. Made by hand piece-by-piece, small mica mineral panels are composed into walls that create a uniquely beautiful atmosphere. The epitome of glamour and refinement, Venice panels are statements of old-world craftsmanship and elegance.

Panels 24" x 32" (61cm x 81.3cm)





Ivoire

During the 1920's, ivory was used on luxurious furniture. Sliced thinly, it would gradually crack in beautiful ways. We have followed exactly these lines and cracks to create large scale gesso panels that we feel are the closest surface to real ivory it is possible to achieve. With our 'Ivoire', everything is created by the hand of the skilled gesso maker.

Panels 24" x 32" (61cm x 81.3cm) are all subtly different in crack placement but are made to sit beautifully together.





Lace

Lace requires meticulous care and attention in creating fine cracks that are consistent but not too consistent. The idea is to build a linear tracery that is full of tiny imperfections and make a constantly varying texture and interest in the surface. Burnishing with agate stones polishes the surface by hand before a protective clear layer is applied.

Panels 24" x 32" (61cm x 81.3cm) are all subtly different in crack placement but are made to sit beautifully together.

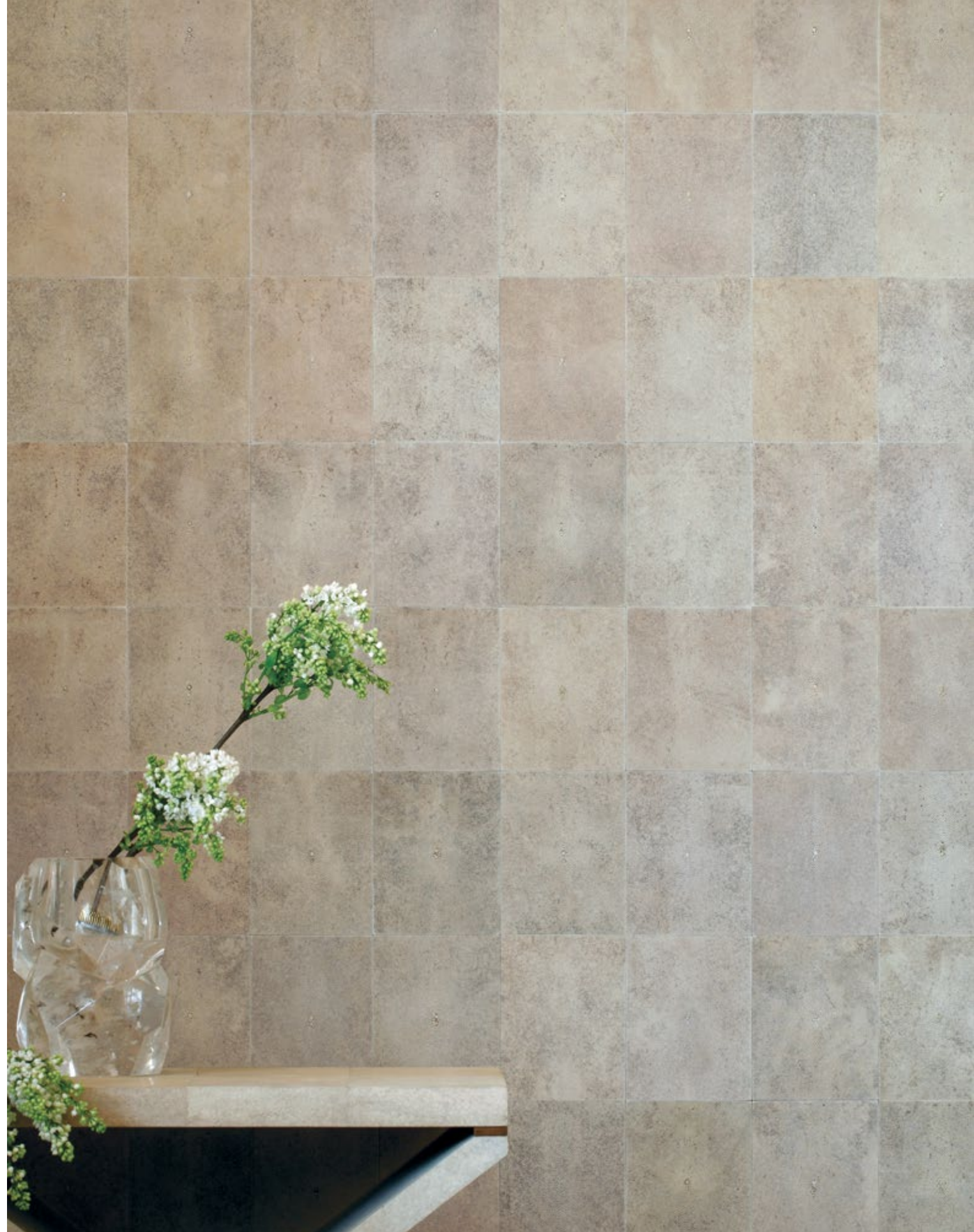




Perle

Alexander Lamont's Perle wall tiles create luxurious wall surfaces made from raw natural chocolate or natural ivory shagreen skins. These are the exact same tones and use the same hand applied methods of the Art Deco period.

Tiles are 6" x 8" (15.25cm x 20.3cm)
and in Natural Chocolate or Natural Speckle Shagreen.



Forêt

Forêt wall panels have sweeping lines of straw criss-crossing to create a strong impression of depth and the sensation of being drawn into a forest. The changes in light and dimension as one moves around these panels are striking and beautiful.

Panels are 24" x 24" (61cm x 61cm).
Available in Beechwood, Bronze and Ebony.



Ligne

Alexander Lamont’s Ligne wall panels bring plains of beautifully reflective tones into special interiors. The warm colours are underpinned by a rhythmic linearity that is created by hand-inlaid ribbons of straw reminiscent of the great drawing rooms of the Jazz age.

Panels 12” x 12” (30.5cm x 30.5cm) and 24” x 24” (61cm x 61cm).
The panels can be arranged either vertically or horizontally.
Available in Beechwood, Bronze and Ebony.



Étoile

The Étoile wall panels bring depth of colour and visual excitement to interior surfaces with asymmetric straw marquetry sunbursts catching and reflecting the light

Panels 12" x 12" (30.5cm x 30.5cm)
and 24" x 24" (61cm x 61cm).

The panels can be arranged either vertically or horizontally.
Available in Beechwood, Bronze and Ebony.

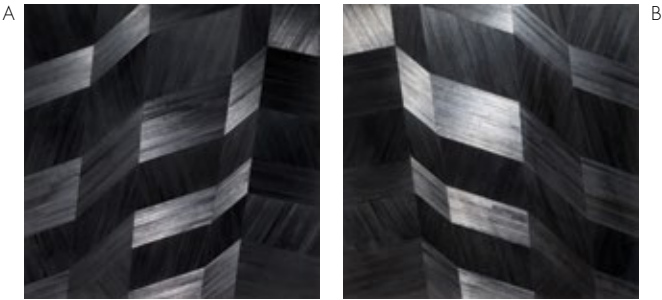


STUDIO COLLECTION

ESCARPA I

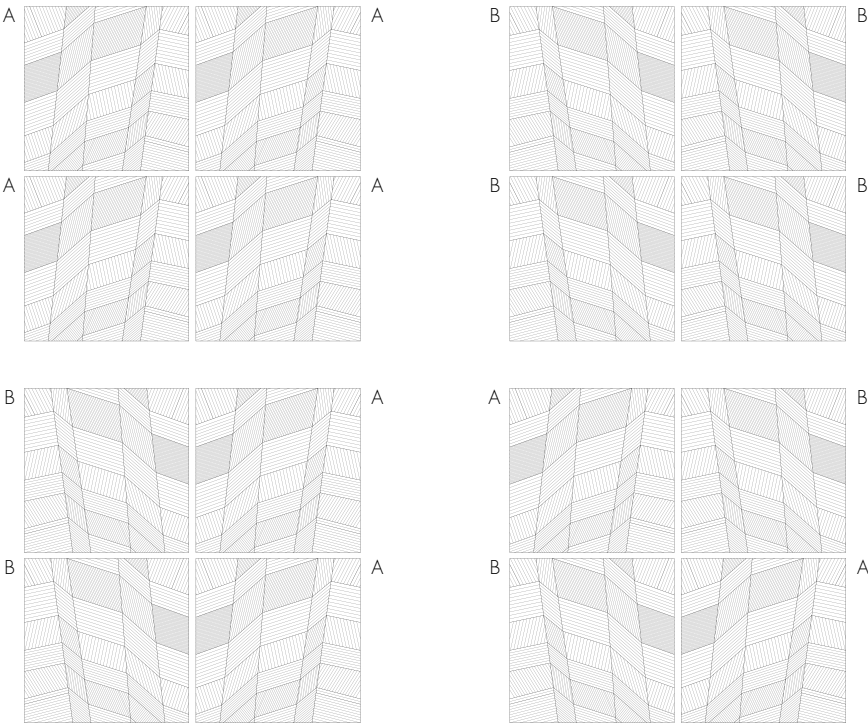


ESCARPA II

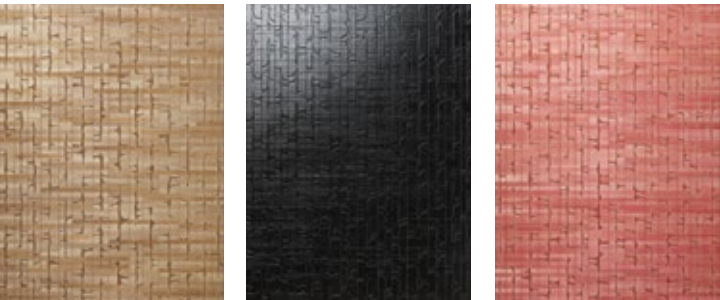


Panels 32" x 32" (81.3cm x 81.3cm)

Escarpa can be installed in various patterns, all creating a striking contemporary abstract linearity for walls.



EMBERS



Flax
Panels 24"x 32" (61cm x 81.3cm)

Ebony

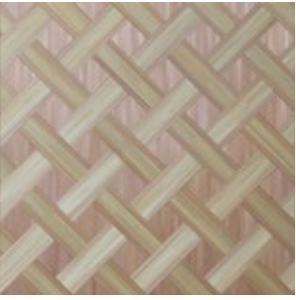
Coral

TORTUGA



Panels 32" x 32" (81.3cm x 81.3cm)

THEBES I



THEBES II

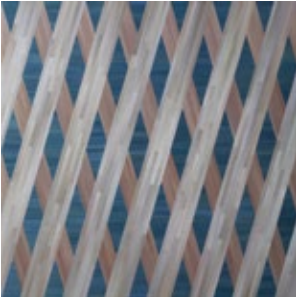


Panels 32" x 32" (81.3cm x 81.3cm)

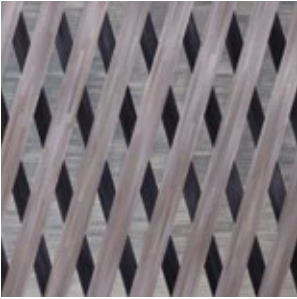
LAGO I



LAGO II



LAGO III



Panels 32" x 32" (81.3cm x 81.3cm)

STUDIO COLLECTION

SOLEIL



Panels 24" x 32" (61cm x 81.3cm)

GROVE



STEPPING STONES

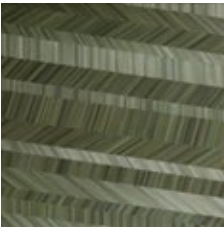


Panels 24" x 24" (61cm x 61cm)

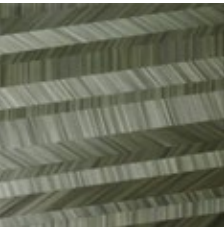
PIERROT



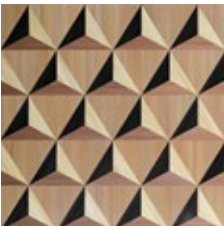
DRIFT I



2 patterns supplied in equal quantities per order.
Panels 24" x 24" (61cm x 61cm)

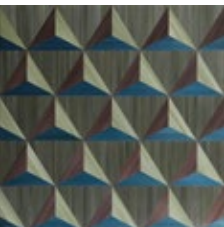
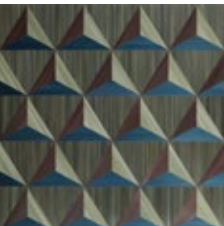


TRYST I

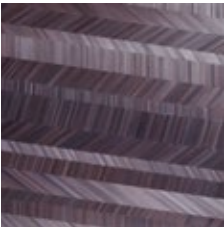


2 patterns supplied in equal quantities per order.
Panels 24" x 24" (61cm x 61cm)

TRYST II



DRIFT II



2 patterns supplied in equal quantities per order.
Panels 24" x 24" (61cm x 61cm)



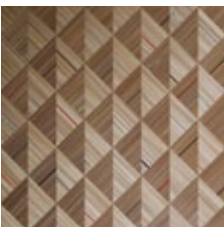
HIDE AND SEEK



2 patterns supplied in equal quantities per order.
Panels 24" x 24" (61cm x 61cm)

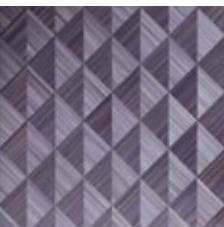


TASHI I



Panels 24" x 24" (61cm x 61cm)

TASHI II



HAVANA

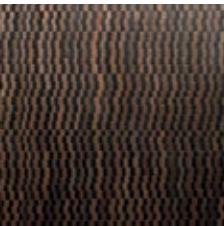


Burnished Metals

Panels 24" x 24" (61cm x 61cm)



Ebony

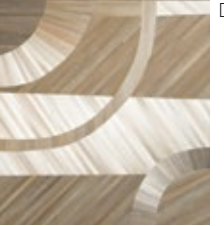
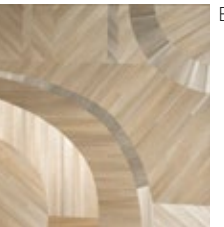


Cigar

SONJA I



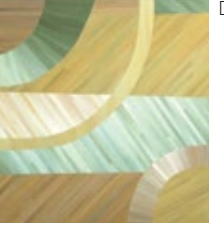
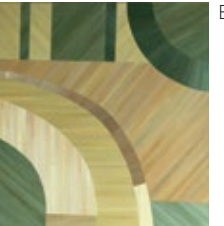
Formal Arrangement



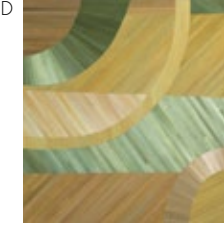
SONJA II



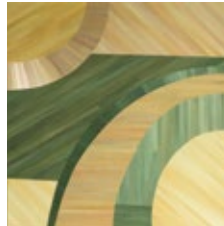
Formal Arrangement
Sonja Panels 24" x 24" (61cm x 61cm)



Flowing Arrangement



Flowing Arrangement



METALLICS COLLECTION

ARGENTO



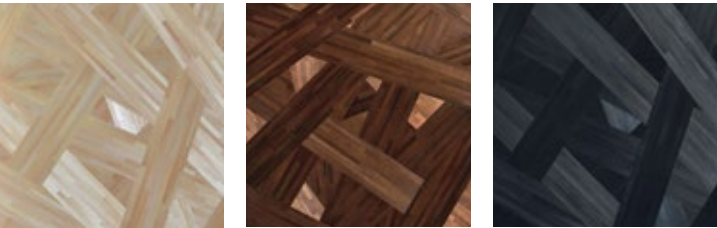
Panels are 12" x 12" (30.5cm x 30.5cm) or 24" x 24" (61cm x 61cm)

MERCURY GOLD



Panels are 12" x 12" (30.5cm x 30.5cm) or 24" x 24" (61cm x 61cm)

FORÊT



Beechwood
Panels 24" x 24" (61cm x 61cm)

Bronze

Ebony

LABIRINTO I



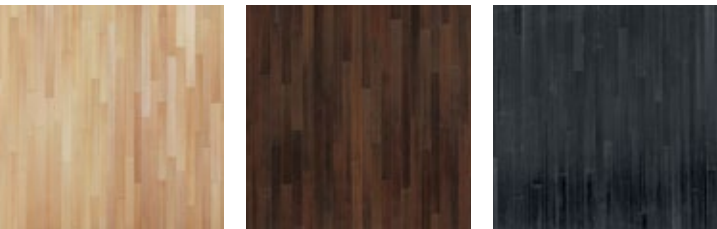
2 patterns supplied in equal quantities per order.
Panels 24" x 24" (61cm x 61cm)

LABIRINTO II



2 patterns supplied in equal quantities per order.
Panels 24" x 24" (61cm x 61cm)

LIGNE



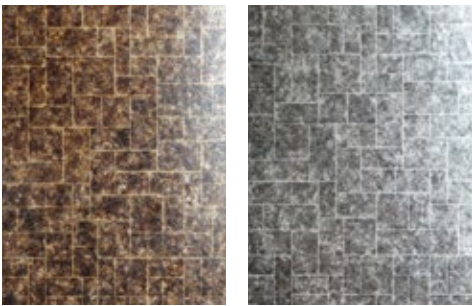
Beechwood
Panels are 12" x 12" (30.5cm x 30.5cm) or 24" x 24" (61cm x 61cm)

Bronze

Ebony

CLASSICS COLLECTION

VENICE



Deep Amber
Panels 24"x 32" (61cm x 81.3cm)

Pewter

IVOIRE

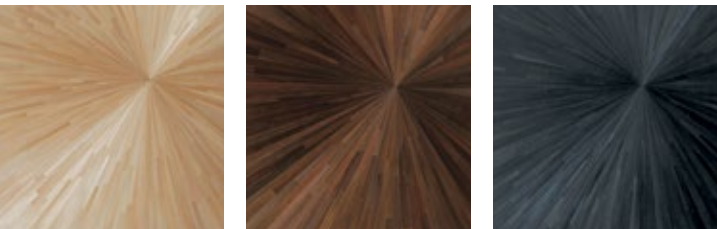


LACE



Crackle patterns are subtly random.
Panels 24"x 32" (61cm x 81.3cm)

ÉTOILE

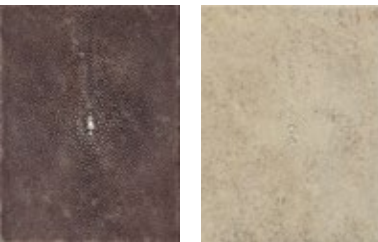


Beechwood
Panels are 12" x 12" (30.5cm x 30.5cm) or 24" x 24" (61cm x 61cm)

Bronze

Ebony

PERLE



Natural Chocolate
Panels 6" x 8" (15.25 x 20.3cm)

Natural Speckle

Colour / Finish Options

	Beechwood	Burnished Metals	Bronze	Ebony	Argento	Mercury Gold	Natural Speckle	Natural Chocolate	Gesso	Deep Amber	Pewter	Unique
Drift I & II												●
Embers												●
Escarpa I A & B		●										
Escarpa II A & B				●								
Étoile	●		●	●	●	●						
Forêt	●		●	●								
Grove												●
Havana		●		●								●
Hide and Seek												●
Ivoire									●			
Labirinto I & II												●
Lace									●			
Lago I,II & III												●
Ligne	●		●	●	●	●						
Perle							●	●				
Pierrot												●
Soleil												●
Sonja I & II												●
Stepping Stones												●
Tashi I & II												●
Thebes I & II												●
Tortuga												●
Tryst I & II												●
Venice										●	●	

Panel Size

	6" x 8" 15.25 x 20.3cm	12" x 12" 30.5 x 30.5cm	24" x 24" 61 x 61cm	24" x 32" 61 x 81.3cm	32" x 32" 81.3 x 81.3cm
Drift I & II			●		
Embers				●	
Escarpa I A & B					●
Escarpa II A & B					●
Étoile		●	●		
Forêt			●		
Grove				●	
Havana			●		
Hide and Seek			●		
Ivoire				●	
Labirinto I & II			●		
Lace				●	
Lago I,II & III					●
Ligne		●	●		
Perle	●				
Pierrot			●		
Soleil				●	
Sonja I & II			●		
Stepping Stones			●		
Tashi I & II			●		
Thebes I & II					●
Tortuga					●
Tryst I & II			●		
Venice				●	

Panel Size Tolerance

	+/- 3/64" +/- 1mm	+/- 1/16" +/- 1.5mm
Drift I & II		●
Embers		●
Escarpa I A & B		●
Escarpa II A & B		●
Étoile		●
Forêt		●
Grove		●
Havana		●
Hide and Seek		●
Ivoire		●
Labirinto I & II		●
Lace		●
Lago I,II & III		●
Ligne		●
Perle	●	
Pierrot		●
Soleil		●
Sonja I & II		●
Stepping Stones		●
Tashi I & II		●
Thebes I & II		●
Tortuga		●
Tryst I & II		●
Venice		●

Panel Thickness (Total)

	6" x 8" 15.25 x 20.3cm	12" x 12" 30.5 x 30.5cm	24" x 24" 61 x 61cm	24" x 32" 61 x 81.3cm	32" x 32" 81.3 x 81.3cm
Drift I & II			9.5mm/3/8"		
Embers				18.5mm/3/4"	
Escarpa I A & B					18.5mm/3/4"
Escarpa II A & B					
Étoile		8mm/5/16"	9.5mm/3/8"		
Forêt					
Grove				18.5mm/3/4"	
Havana			9.5mm/3/8"		
Hide and Seek					
Ivoire				18.5mm/3/4"	
Labirinto I & II			9.5mm/3/8"		
Lace				18.5mm/3/4"	
Lago I,II & III					18.5mm/3/4"
Ligne		8mm/5/16"	9.5mm/3/8"		
Perle	8mm/5/16"				
Pierrot			9.5mm/3/8"		
Soleil				18.5mm/3/4"	
Sonja I & II					
Stepping Stones			9.5mm/3/8"		
Tashi I & II					
Thebes I & II					18.5mm/3/4"
Tortuga					
Tryst I & II			9.5mm/3/8"		
Venice				18.5mm/3/4"	

Panel Weight

	6" x 8" 15.25 x 20.3cm	12" x 12" 30.5 x 30.5cm	24" x 24" 61 x 61cm	24" x 32" 61 x 81.3cm	32" x 32" 81.3 x 81.3cm
Drift I & II			3kg/6.5lbs		
Embers				7kg/15.4lbs	
Escarpa I A & B					9.5kg/21lbs
Escarpa II A & B					
Étoile		700g/1.5lbs	3kg/6.5lbs		
Forêt					
Grove				7kg/15.4lbs	
Havana					
Hide and Seek			3kg/6.5lbs		
Ivoire				7.5kg/16.5lbs	
Labirinto I & II			3kg/6.5lbs		
Lace				7.5kg/16.5lbs	
Lago I,II & III					9.5kg/21lbs
Ligne		700g/1.5lbs	3kg/6.5lbs		
Perle	350g/75oz				
Pierrot			3kg/6.5lbs		
Soleil				7kg/15.4lbs	
Sonja I & II					
Stepping Stones			3kg/6.5lbs		
Tashi I & II					
Thebes I & II					9.5kg/21lbs
Tortuga					
Tryst I & II			3kg/6.5lbs		
Venice				7.5kg/16.5lbs	

Sub-strate Materials

Cement Board	6" x 8" 15.25 x 20.3cm
7.4mm HDF	12" x 12" 30.5 x 30.5cm
9mm MDF MR	24" x 24" 61 x 61cm
18mm MDF MR	32" x 32" 81.3 x 81.3cm
	24" x 32" 61 x 81.3cm
6mm Mineral Board*	12" x 12" 30.5 x 30.5cm
	24" x 24" 61 x 61cm
	24" x 32" 61 x 81.3cm

*Recommended only for projects requiring fire-rating

PYC

Our straw marquetry has been independently tested to meet the following PYC codes:

- IMO part 2 - Smoke Toxicity
 - IMO part 5 - Surface Flammability
- For these projects we require the yacht builder to provide pre-fitted PYC substrates.

Handling and Installation

Le Mur wall panels should always be installed by a professional wall panel installer or tiler. Each group of wall panels is supplied with specific product handling and installation instructions. These must be read carefully and followed closely to ensure successful installation.

Maintenance

Le Mur wall panels should be touched as little as possible but if necessary can be cleaned to remove dust using a very soft brush. Fingerprints can be removed using a cloth dampened very lightly with clean water. Rub gently to remove fingerprints before buffing with a dry soft cloth. Do not use chemical cleaners or any other cleaning substances.

The surface of the Le Mur wall panels must be kept completely dry. They are not recommended for outdoor use or for use in wet rooms where direct contact with water/steam may occur.

Indications

Le Mur wall panels are made from natural materials and precious metal leaf that have been applied by hand. They display the irregularities and variations in colour and tone that form part of their natural beauty and hand process. Natural tones will also vary wonderfully in different light conditions.

Lead-Times, Pricing

We hold constantly changing but limited stocks of Le Mur wall coverings. Lead-times depend on the quantity of the order and will be provided upon receipt of actual order enquiries.

Pricing and full terms and conditions can be obtained by contacting the relevant Alexander Lamont office or partner found on the back cover of this catalogue.

Customization

We are able to customize the Le Mur collection and we will respond with feasibility, lead-times and prices once the specifics of the project have been received.





ALEXANDER
LAMONT

Credits

Photography : Boonyakorn Pulsri
Styling : Naomi Daimaru

All rights reserved. No part of this publication may be reproduced in any form or any means without prior permission in writing from Alexander Lamont Limited
© Alexander Lamont Limited



ALEXANDER
LAMONT